



**Libuseng Lillian  
Mokotleng**  
0824028574  
libuseng@choprop.co.za



**Libuseng Lillian  
Mokotleng**  
0824028574  
libuseng@choprop.co.za

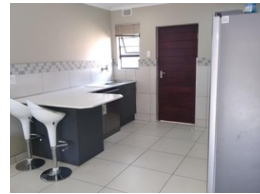
Contact Choprop Sales

0126534444  
0126534444

146 Willem Botha Street  
Wierda Park  
0157



Web Ref RL9184



**R1,700,000**

3 2 2

**Monthly Bond Repayment** R17,258.89

Calculated over 20 years at 10.75% with no deposit.

**Transfer Costs** R55,039.00 **Bond Costs** R30,875.00

These calculations are only a guide. Please ask your conveyancer for exact calculations.

**Monthly Levy** R700 **Monthly Rates** R350

3 bedroom house at clayville

3 bedroom house with beautiful marvellous build in kitchen spacious open plan lounge and dining room on your left is toilet with basin and bathroom you pass to the main bedroom on your right is another bedroom you go with passage to the main bedroom with en-suits bathroom basin and toilet is situated inside the estate security is 24 hours you open the gate with remote control

## Features

**Pets Allowed** Yes

### Interior

Bedrooms 3  
Bathrooms 2  
Kitchens 1  
Recep. Rooms 2  
Furnished Yes

### Extras

Paved

### Exterior

Garages 2  
Carports / Parkings 5  
Security Yes  
Pool No  
Views False

### Sizes

Land Size 400m²