



Libuseng Lillian Mokotleng
0824028574
libuseng@choprop.co.za



Lucy Martha Matseba
0842790300
lucy@choprop.co.za

Contact Choprop Sales

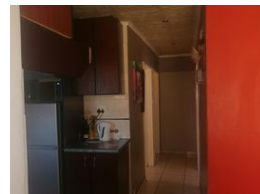
0126534444
0126534444

146 Willem Botha Street
Wierda Park
0157



SOLE MANDATE

Web Ref RL14544



R1,150,000

 3
  2
  1

Monthly Bond Repayment R11,675.13

Calculated over 20 years at 10.75% with no deposit.

Transfer Costs R32,749.00 **Bond Costs** R25,220.00

These calculations are only a guide. Please ask your conveyancer for exact calculations.

A stunning 3 bedroom house for sale in clayville

This massive family home offers 3 bedrooms 2 bathrooms an open kitchen and a lounge and double parking area and a garage

Features

Pets Allowed		Yes			
Interior		Exterior		Sizes	
Bedrooms	3	Garages	1	Land Size	250m²
Bathrooms	2	Carports / Parkings	3		
Kitchens	1	Pool	No		
Recep. Rooms	1				