

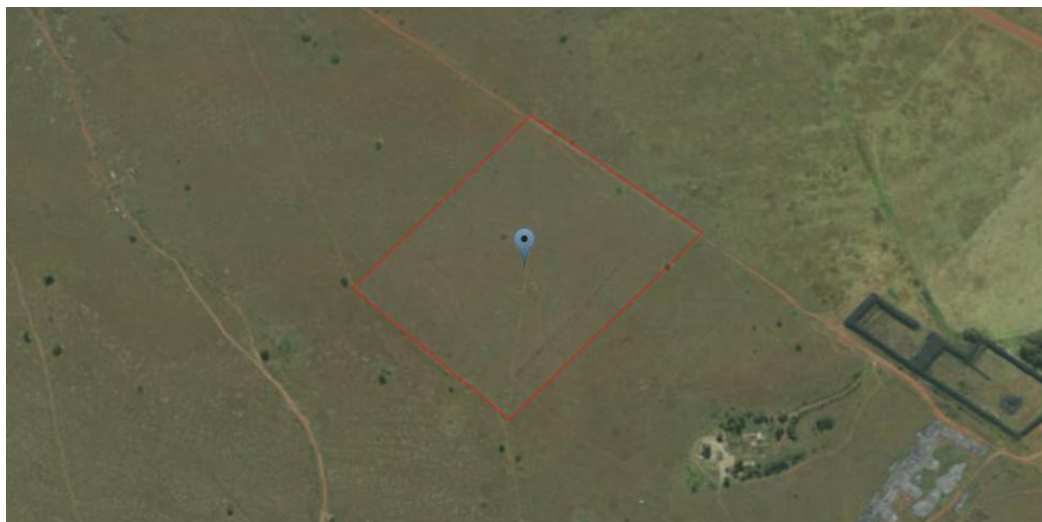


Armaan Essa
0828088886
armaan@choprop.co.za

Contact Choprop Sales

0126534444
0126534444

146 Willem Botha Street
Wierda Park
0157



Web Ref RL8546



R1,999,000

Monthly Bond Repayment R20,294.43

Calculated over 20 years at 10.75% with no deposit.

Transfer Costs R75,146.00 **Bond Costs** R32,760.00

These calculations are only a guide. Please ask your conveyancer for exact calculations.

Monthly Rates R547

**PRACTICAL AND LARGE VACANT LAND FOR SALE, IDEAL DEVELOPMENT STAND!
ERASMIA! MOOIPLAATS!**

A beautiful piece of vacant land just ideal for any development or agricultural use. Situated on the back road of Erasmia this land draws a lot of passing traffic and can be perfect for any developer.
The land size measures a whopping 5.72 hectares and is priced to sell!!
Mooiplaats is a neighboring agricultural and farming area.
Call today to make your offer!!

Features