



Armaan Essa
0828088886
armaan@choprop.co.za

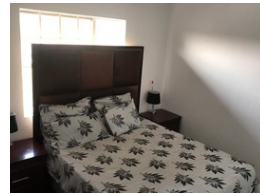
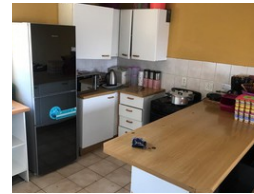
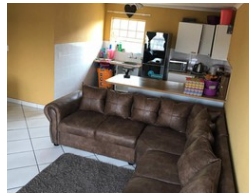
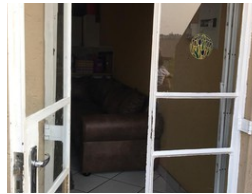
Contact Choprop Sales

0126534444
0126534444

146 Willem Botha Street
Wierda Park
0157



Web Ref RL8144



R730,000

2 1

Monthly Bond Repayment R7,411.17

Calculated over 20 years at 10.75% with no deposit.

Transfer Costs R25,898.00 **Bond Costs** R19,565.00

These calculations are only a guide. Please ask your conveyancer for exact calculations.

Monthly Levy R1,083 **Monthly Rates** R450

INVEST IN ROSEWOOD COMPLEX

This attractive, open plan first floor apartment is made up of 2 bedrooms, 1 bathroom, an open plan kitchen and living areas.

Both the bedrooms are spacious and have built-in-cupboards, The bathroom comprises of a toilet, basin, and a bathtub with a built-in shower head to the wall. The kitchen is tiled, with a double sink, a breakfast nook and space for a fridge. The kitchen over looks the spacious and airy living room, which has a small balcony at the entrance.

This unit has a covered parking, as well as guest parking. The complex boasts a pool, access control and a security guard. It is only 1.7/km away from Mall of Africa. Its close to ALL major routes and amenities.

See below for amenities in the area:

Grand Central Airport Airport 3.39 km

- Engen Waterfall Convenience Centre - 0.63 km

- BP Waterfall Service...

Features

Interior

Bedrooms	2
Bathrooms	1
Kitchens	1
Recep. Rooms	1

Exterior

Carports / Parkings	1
Pool	Yes

Sizes

Floor Size	62m²
Land Size	8,280m²