



Libuseng Lillian Mokotleng
0824028574
libuseng@choprop.co.za



Libuseng Lillian Mokotleng
0824028574
libuseng@choprop.co.za

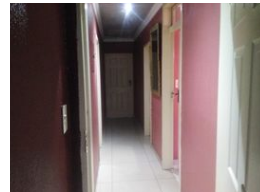
Contact Choprop Sales

0126534444
0126534444

146 Willem Botha Street
Wierda Park
0157



Web Ref RL9501



R1,250,000

3 2 1

Monthly Bond Repayment R12,690.36

Calculated over 20 years at 10.75% with no deposit.

Transfer Costs R36,117.00 **Bond Costs** R27,105.00

These calculations are only a guide. Please ask your conveyancer for exact calculations.

Monthly Rates R500

3 bedroom for sale at hospital view

3 bedroom house with lounge build in kitchen dining bathroom toilet shower en-suite garage and carport face brick house with wall and gate

Features

Pets Allowed Yes

Interior

Bedrooms	3
Bathrooms	2
Kitchens	1
Recep. Rooms	2
Furnished	Yes

Exterior

Garages	1
Carports / Parkings	1
Security	No
Pool	No
Views	True

Sizes

Land Size	500m²
-----------	-------

Extras

3 bedroom 2 toilet shower bathroom lounge build in kitchen and dining room