

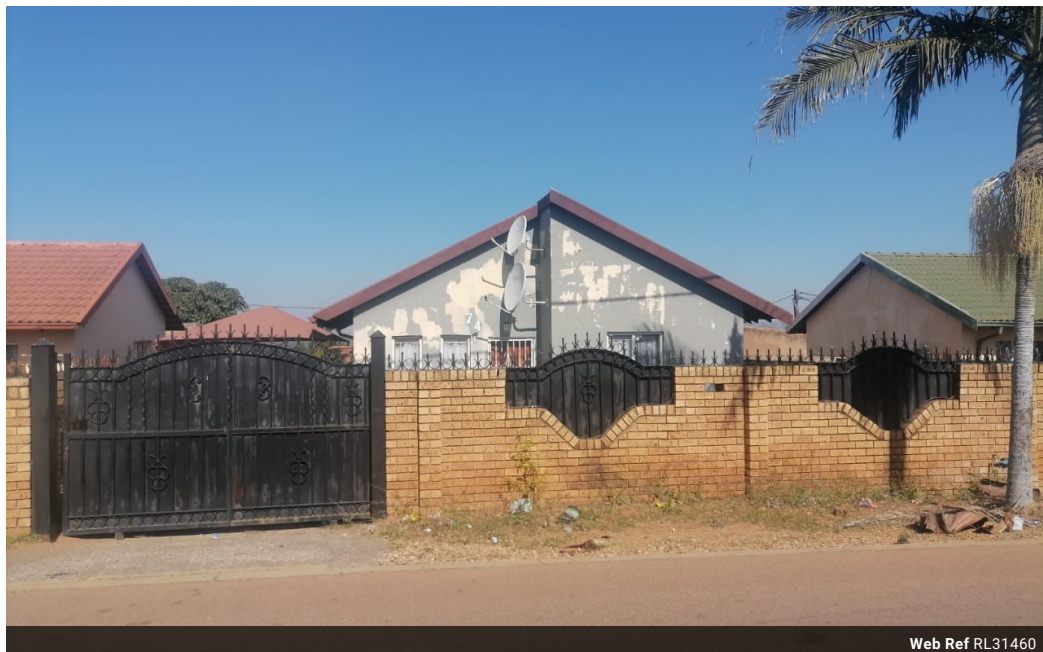


Libuseng Lillian
Mokotleng
0824028574
libuseng@choprop.co.za

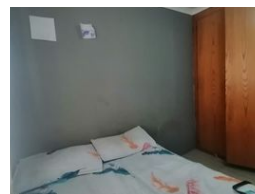
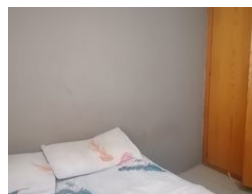
Contact Choprop Sales

0126534444
0126534444

146 Willem Botha Street
Wierda Park
0157



Web Ref RL31460



R560,000

2 1

Monthly Bond Repayment R5,685.28

Calculated over 20 years at 10.75% with no deposit.

Transfer Costs R21,217.00 **Bond Costs** R15,795.00

These calculations are only a guide. Please ask your conveyancer for exact calculations.

Monthly Rates R800

2 bedroom house for sale in Soshanguve

It offers the folloowing:

2 bedrooms
1 bathroom
kitchen
lounge
spacious yard for investment as well as extension purposes

Features

Pets Allowed	Yes		
Interior		Exterior	Sizes
Bedrooms	2	Carports / Parkings	Land Size
Bathrooms	1	Security	264m²
Kitchens	1	Pool	
Recep. Rooms	1	Views	
Furnished	No		