



**Bertha Tozana**  
0645181002  
bertha@choprop.co.za

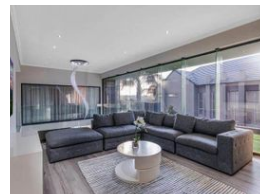
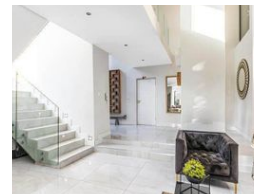
Contact Choprop Sales

0126534444  
0126534444

146 Willem Botha Street  
Wierda Park  
0157



Web Ref RL10423



**R8,950,000**

 4  4.5  2

**Monthly Bond Repayment** R90,862.99

Calculated over 20 years at 10.75% with no deposit.

**Transfer Costs** R859,714.00 **Bond Costs** R80,035.00

These calculations are only a guide. Please ask your conveyancer for exact calculations.

**Monthly Levy** R2,500 **Monthly Rates** R3,600

## 4 Bedroom Cluster For Sale in Woodmead

Extraordinary! Sophistication!

This Modern extraordinary family home offers:

Huge entrance hall leading to airy and open living areas ( lounge, dining areas and a TV room).

4 spacious bedrooms with fitted cupboards, 4 delightful en-suite bathrooms.

Open plan chef's dream kitchen with a separate scullery and laundry rooms.

The property also has staff quarters with a bathroom.

Double garage and plenty of parking spaces.

A large and exquisite covered patio leads on to a gigantic sparkling swimming pool and landscaped garden perfect for entertaining.

The estate offers great 24 hours security, clubhouse, tennis court and kiddies play area.

Seeing is believing.....

## Features

**Pets Allowed** Yes

### Interior

Bedrooms	4
Bathrooms	4.5
Kitchens	1
Recep. Rooms	3
Studies	1
Furnished	No

### Exterior

Garages	2
Security	Yes
Dom. Accom.	1
Pool	Yes
Views	Yes

### Sizes

Floor Size	570m <sup>2</sup>
Land Size	750m <sup>2</sup>