



Bertha Tozana
0645181002
bertha@choprop.co.za

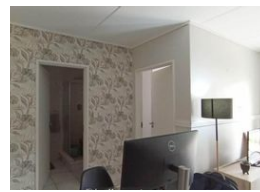
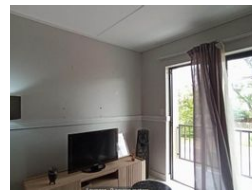
Contact Choprop Sales

0126534444
0126534444


146 Willem Botha Street
Wierda Park
0157



Web Ref RL31457



R690,000

 1  1

Monthly Bond Repayment R7,005.08

Calculated over 20 years at 10.75% with no deposit.

Transfer Costs R23,730.00 **Bond Costs** R17,680.00

These calculations are only a guide. Please ask your conveyancer for exact calculations.

Monthly Levy R1,100 **Monthly Rates** R600

Stunning 1 Bed 3rd Floor Unit at Greenlee Lifestyle Estate!

Discover modern living and urban convenience in this stunning 1 bedroom apartment located on the 3rd floor of the highly sought-after Greenlee Lifestyle Estate in Linbro Park.

This light-filled, open-plan unit features a stylish kitchen with sleek countertops and contemporary cabinetry, seamlessly flowing into the comfortable living area. Large windows flood the space with natural light, creating a warm and inviting ambiance. Step outside onto your private balcony, perfect for morning coffee or evening relaxation.

The well-appointed bedroom offers a tranquil retreat, complete with built-in closet space. A modern bathroom boasts elegant fixtures and a refreshing walk-in shower.

Greenlee Lifestyle Estate offers residents exceptional amenities, including a Sparkling swimming pool, in-house Restaurant, quiet communal work...

Features

Interior

Bedrooms	1
Bathrooms	1
Kitchens	1
Recep. Rooms	2
Furnished	No

Exterior

Carports / Parkings	1
Security	Yes
Pool	Yes
Views	Yes

Sizes

Floor Size	40m²
------------	------