



**Libuseng Lillian  
Mokotleng**  
0824028574  
libuseng@choprop.co.za



**Libuseng Lillian  
Mokotleng**  
0824028574  
libuseng@choprop.co.za

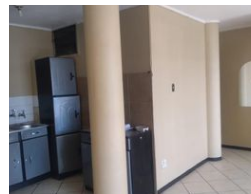
Contact Choprop Sales

0126534444  
0126534444

146 Willem Botha Street  
Wierda Park  
0157



Web Ref RL11210



**R395,000**

 2  1

**Monthly Bond Repayment** R4,010.15

Calculated over 20 years at 10.75% with no deposit.

**Transfer Costs** R16,806.00 **Bond Costs** R11,960.00

These calculations are only a guide. Please ask your conveyancer for exact calculations.

**Monthly Levy** R700 **Monthly Rates** R700

2 bedroom flat for sale in pretoria

2 bedroom open plan lounge kitchen build in wardrobe bathroom toilet basin 24 hours security electric fence

## Features

### Interior

Bedrooms	2
Bathrooms	1
Kitchens	1
Recep. Rooms	1
Furnished	Yes

### Extras

Carport

### Exterior

Carports / Parkings	1
Security	Yes
Pool	No
Views	False