

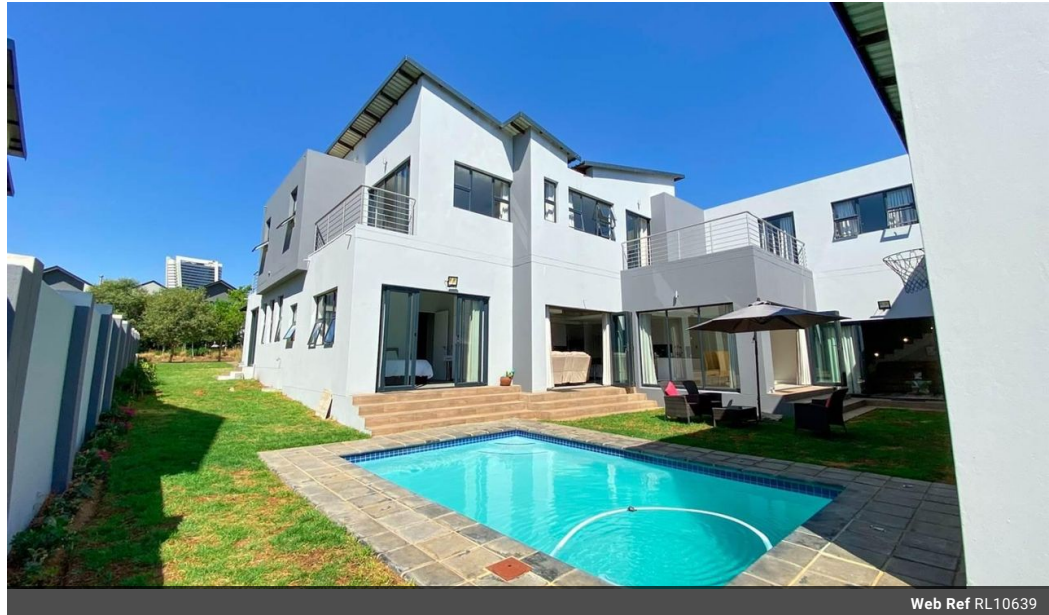


**Bertha Tozana**  
0645181002  
bertha@choprop.co.za

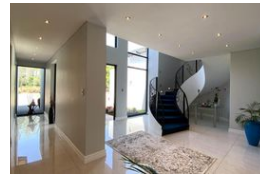
Contact Choprop Sales

0126534444  
0126534444

146 Willem Botha Street  
Wierda Park  
0157



Web Ref RL10639



**R9,950,000**

🛏️ 6 🚿 6.5 🚗 3

**Monthly Bond Repayment** R101,015.28

Calculated over 20 years at 10.75% with no deposit.

**Transfer Costs** R975,176.00 **Bond Costs** R84,785.00

These calculations are only a guide. Please ask your conveyancer for exact calculations.

**Monthly Levy** R4,500 **Monthly Rates** R7,600

## 6 Bedroom Cluster For Sale in Waterfall Country Village

Sophistication, Magnificent family home in a super-secure estate!

A majestic entrance greets you as you enter this spectacular family home located at one of the highest points in Waterfall Country Estate, this magnificent family home features:

- 4 bedroom (all ensuite) primary residence with a storeroom
- study room
- playroom
- laundry as well as a separate scullery
- pantry
- staff quarter
- guest toilet
- entertainment room with its own shower and toilet, it comes with an open plan lounge, dining and kitchen and 2 reception areas.
- There is also a 2 bedroom (both ensuite) open plan lounge and kitchen flatlet, ideal for family members that require their independence.

This remarkable home has a saltwater chlorinated pool.

The Residents have access to Waterfall Country Village Estate's Clubhouse offers: Squash...

## Features

<b>Pets Allowed</b>	Yes				
<b>Interior</b>		<b>Exterior</b>		<b>Sizes</b>	
Bedrooms	6	Garages	3	Floor Size	608m <sup>2</sup>
Bathrooms	6.5	Carports / Parkings	6	Land Size	1,039m <sup>2</sup>
Kitchens	1	Security	Yes		
Recep. Rooms	5	Dom. Accom.	1		
Studies	1	Pool	Yes		
Furnished	No	Views	Yes		