

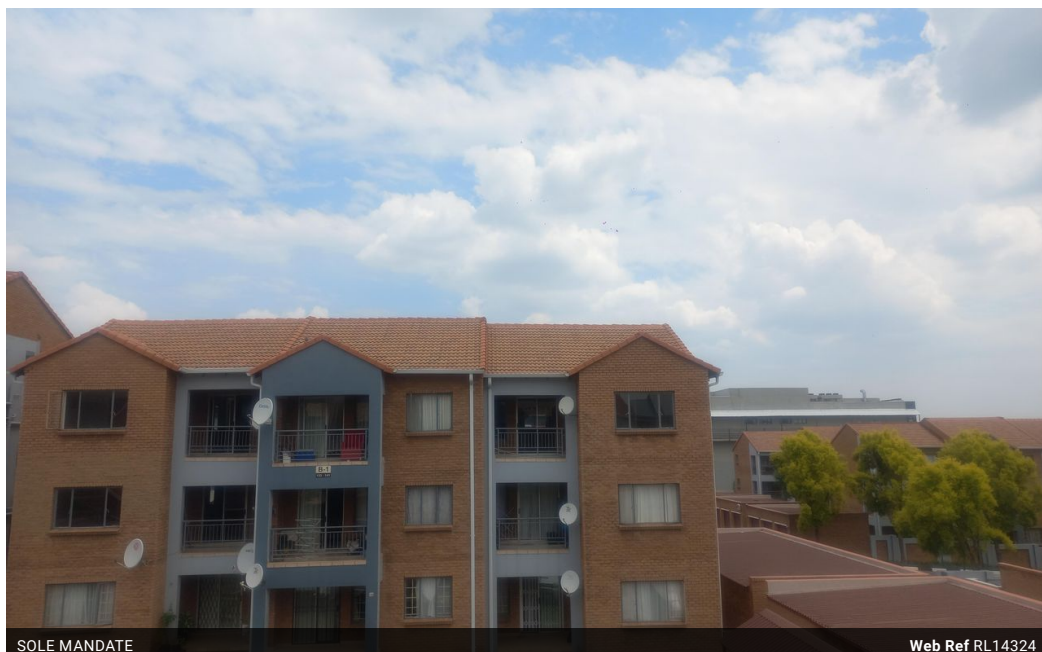


Sivanandan
Govindasamy Packary
0824920583
siva@choprop.co.za

Contact Choprop Sales

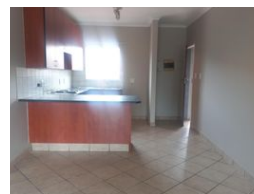
0126534444
0126534444

146 Willem Botha Street
Wierda Park
0157



SOLE MANDATE

Web Ref RL14324



R695,000

2 2 1

Monthly Bond Repayment R7,055.84

Calculated over 20 years at 10.75% with no deposit.

Transfer Costs R23,730.00 **Bond Costs** R17,680.00

These calculations are only a guide. Please ask your conveyancer for exact calculations.

Monthly Levy R2,850 **Monthly Rates** R550

Calling all investors !!!

Make this investment opportunity yours to own today!!!

Welcome, investors! This spacious apartment in Vorna Valley offers a lucrative opportunity. Boasting a generously sized kitchen, lounge, and dining area that seamlessly opens onto a balcony, this property is perfect for tenants seeking comfort and convenience.

The apartment features a main en suite bedroom, providing privacy and luxury, while the second bedroom shares a guest bathroom, optimizing living space. Additionally, a single garage and ample visitors parking ensure hassle-free accommodation for residents and guests alike.

Security is paramount with 24-hour surveillance, providing peace of mind for occupants. Leisure amenities include a swimming pool, clubhouse, and braai area, enhancing the lifestyle appeal of the property.

With its potential for passive...

Features

Interior

Bedrooms	2
Bathrooms	2
Kitchens	1
Recep. Rooms	2

Exterior

Garages	1
Carports / Parkings	1
Security	Yes
Pool	Yes
Views	Yes

Sizes

Floor Size	83m²
Land Size	31,266m²