



Sivanandan
Govindasamy Packary
0824920583
siva@choprop.co.za

Contact Choprop Sales

0126534444
0126534444

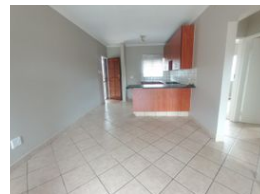
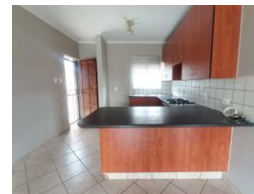
146 Willem Botha Street
Wierda Park
0157

2 Bedroom Apartment For Sale in Vorna Valley



SOLE MANDATE

Web Ref RL14322



R695,000

🛏️ 2 🚿 2 🏠 1

Monthly Bond Repayment R7,055.84

Calculated over 20 years at 10.75% with no deposit.

Transfer Costs R23,730.00 **Bond Costs** R17,680.00

These calculations are only a guide. Please ask your conveyancer for exact calculations.

Monthly Levy R2,850 **Monthly Rates** R550

Calling first time buyers in Vorna Valley !!!

Make this investment opportunity yours to own today!!!

Nestled in the serene enclave of Vorna Valley, this inviting apartment offers a harmonious blend of comfort and convenience. Step into the spacious kitchen, where culinary aspirations come to life amidst ample counter space and storage. The adjoining lounge and dining areas seamlessly flow onto a balcony, treating you to breathtaking views that redefine relaxation.

Retreat to the main en suite bedroom, a sanctuary of tranquility boasting privacy and comfort. The second bedroom, thoughtfully designed with convenience in mind, shares access to a well-appointed bathroom.

Parking is a breeze with a single garage provided for your exclusive use, while ample visitors' parking ensures convenience for guests.

Experience peace of mind with 24-hour security within the...

Features

Interior

Bedrooms	2
Bathrooms	2
Kitchens	1
Recep. Rooms	2
Furnished	No

Exterior

Garages	1
Carports / Parkings	1
Security	Yes
Pool	Yes
Views	Yes

Sizes

Floor Size	83m²
Land Size	36,122m²