



Libuseng Lillian Mokotleng
0824028574
libuseng@choprop.co.za



Lucy Martha Matseba
0842790300
lucy@choprop.co.za

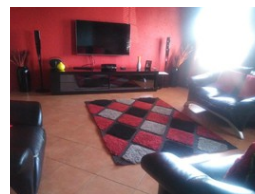
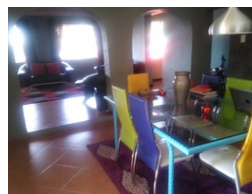
Contact Choprop Sales

0126534444
0126534444

146 Willem Botha Street
Wierda Park
0157



Web Ref RL6182



R1,500,000

3 2 1

Monthly Bond Repayment R15,228.43

Calculated over 20 years at 10.75% with no deposit.

Transfer Costs R45,785.00 **Bond Costs** R28,990.00

These calculations are only a guide. Please ask your conveyancer for exact calculations.

Monthly Rates R500

A stunning 3 bedroom house for sale in rabie ridge

This double storey modern design offers 3 bedrooms, 2 bathroom, spacious open plan kitchen a dining room and a lounge, the bedrooms are all upstairs and has one bedroom cottage at the back for investment purposes. It can be good for investment as well as family residential home, the yard is super big for the extensions purposes and a big garage.

Features

Interior

Bedrooms	3
Bathrooms	2
Furnished	False

Exterior

Garages	1
Pool	No

Sizes

Land Size	412m²
-----------	-------