



Libuseng Lillian
Mokotleng
0824028574
libuseng@choprop.co.za

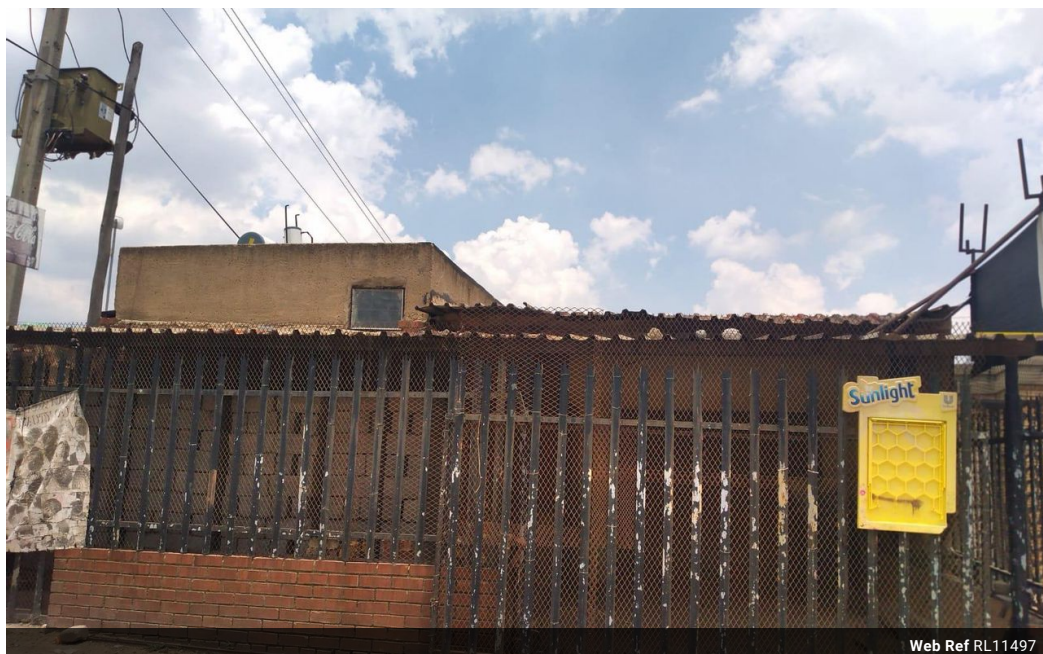


Libuseng Lillian
Mokotleng
0824028574
libuseng@choprop.co.za

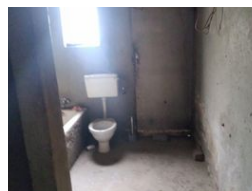
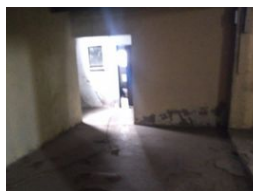
Contact Choprop Sales

0126534444
0126534444

146 Willem Botha Street
Wierda Park
0157



Web Ref RL11497



R470,000

3 1

Monthly Bond Repayment R4,771.58

Calculated over 20 years at 10.75% with no deposit.

Transfer Costs R19,049.00 **Bond Costs** R13,910.00

These calculations are only a guide. Please ask your conveyancer for exact calculations.

Monthly Rates R500

Investment property in ivory park

Investment stan with hall 3 rooms in ivory park

Features

Pets Allowed	Yes			
Interior		Exterior		Sizes
Bedrooms	3	Security	No	Land Size
Bathrooms	1	Pool	No	280m²
Furnished	Yes	Views	False	
Extras				
Hall				