

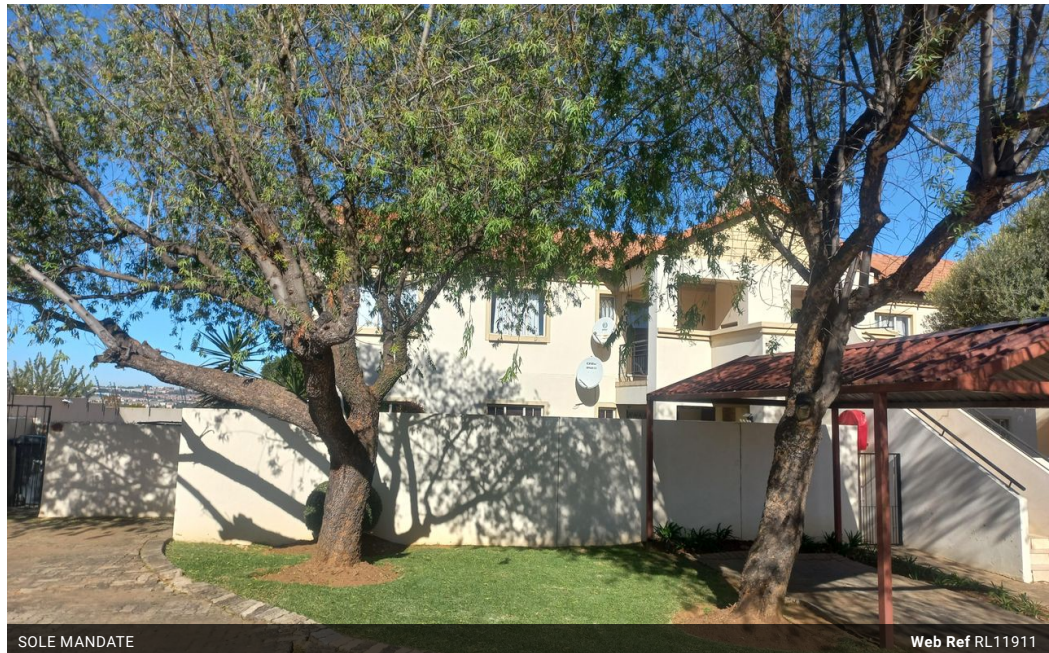


Sivanandan  
Govindasamy Packary  
0824920583  
siva@choprop.co.za

Contact Choprop Sales

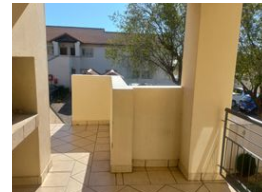
0126534444  
0126534444

146 Willem Botha Street  
Wierda Park  
0157



SOLE MANDATE

Web Ref RL11911



**R750,000**

2 1 1

**Monthly Bond Repayment** R7,614.22

Calculated over 20 years at 10.75% with no deposit.

**Transfer Costs** R25,898.00 **Bond Costs** R19,565.00

These calculations are only a guide. Please ask your conveyancer for exact calculations.

**Monthly Levy** R1,400 **Monthly Rates** R300

Calling all investors!!!

Make this an investment opportunity yours to own today!!!

As one enters the home one is greeted with a spacious patio and braai area with a beautiful view. One can find a huge lounge and dining room area and fully tiled. Leading to an open plan Kitchen, cupboards, one electrical appliance, stove and breakfast nook. On the left one can find the two spacious bedrooms, built in cupboards and laminated flooring sharing a full bathroom and tiled. Currently tenanted.

The unit offers a single garage and a carport with ample visitors parking.

One can only find this in a sort after area of Country View the greater part of Midrand!!!

Call today to avoid disappointment!!!

## Features

### Interior

Bedrooms	2
Bathrooms	1
Kitchens	1
Recep. Rooms	2

### Exterior

Garages	1
Carports / Parkings	1
Security	Yes
Pool	No
Views	Yes

### Sizes

Floor Size	88m <sup>2</sup>
------------	------------------