



**Libuseng Lillian Mokotleng**  
0824028574  
libuseng@choprop.co.za



**Lucy Martha Matseba**  
0842790300  
lucy@choprop.co.za

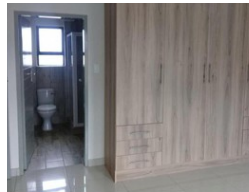
Contact Choprop Sales

0126534444  
0126534444

146 Willem Botha Street  
Wierda Park  
0157



Web Ref RL8598



**R1,560,000**

 3  2  2

**Monthly Bond Repayment** R15,837.57

Calculated over 20 years at 10.75% with no deposit.

**Transfer Costs** R47,585.00 **Bond Costs** R28,990.00

These calculations are only a guide. Please ask your conveyancer for exact calculations.

**Monthly Levy** R900 **Monthly Rates** R500 **Special Levy** R250

### 3 bedroom house for sale in clayville

This beautiful family home offers 3 bedroom, main bedroom with en\_suite and fitted walls, 2 bathroom with shower and a full bath. Open plan kitchen with built-in cupboards, dining room and a lounge.

It is situated in the heart of clayville in the security estate namely Parklands. The house is newly built. Call now for any information.

### Features

Interior		Exterior		Sizes	
Bedrooms	3	Garages	2	Land Size	350m²
Bathrooms	2	Pool	No		
Kitchens	1				
Recep. Rooms	2				