

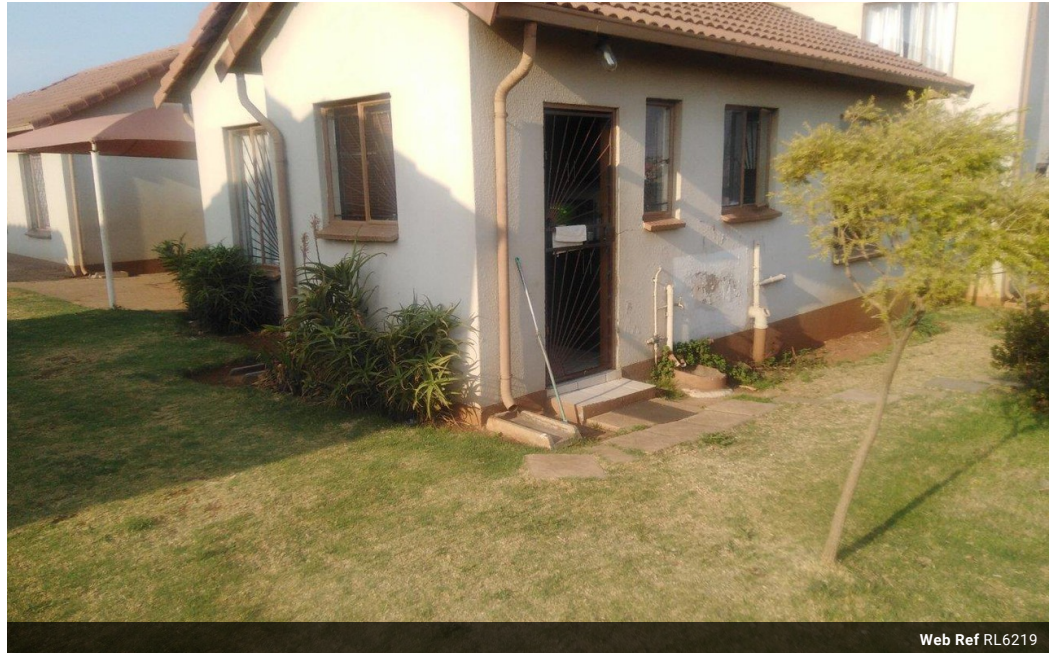


**Libuseng Lillian  
Mokotleng**  
 0824028574  
 libuseng@choprop.co.za

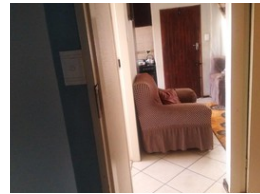
Contact Choprop Sales

0126534444  
 0126534444

146 Willem Botha Street  
 Wierda Park  
 0157



Web Ref RL6219



**R670,000**

 2   
  1

**Monthly Bond Repayment** R6,802.03

Calculated over 20 years at 10.75% with no deposit.

**Transfer Costs** R23,730.00    **Bond Costs** R17,680.00

These calculations are only a guide. Please ask your conveyancer for exact calculations.

2 bedroom house for sale in clayville

It is situated inside the security estate namely clavia gardens with 2 bedroom, 1 bathroom open plan kitchen with built-in cupboards and a lounge. This house is close to amenities, shopping malls, and public schools. Call your area agent for any assistance.

## Features

### Interior

Bedrooms	2
Bathrooms	1
Kitchens	1

### Exterior

Pool	No
------	----

### Sizes

Land Size	42m²
-----------	------