



Libuseng Lillian
Mokotleng
0824028574
libuseng@choprop.co.za

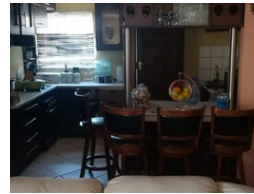
Contact Choprop Sales

0126534444
0126534444

146 Willem Botha Street
Wierda Park
0157



Web Ref RL6215



R960,000

 3  2

Monthly Bond Repayment R9,746.20

Calculated over 20 years at 10.75% with no deposit.

Transfer Costs R30,412.00 **Bond Costs** R23,335.00

These calculations are only a guide. Please ask your conveyancer for exact calculations.

Monthly Rates R800

3 bedroom house for sale in clayville

This family home offers 3 bedroom, 2 bathroom open plan, kitchen dining room a lounge and Double garage. It is situated near public transport and schools. The square meters is approximately 314. Call now to view this massive home. Read less

Features

Interior

Bedrooms	3
Bathrooms	2
Kitchens	1
Furnished	False

Exterior

Pool	No
------	----

Sizes

Land Size	312m²
-----------	-------