



**Libuseng Lillian Mokotleng**  
0824028574  
libuseng@choprop.co.za



**Lucy Martha Matseba**  
0842790300  
lucy@choprop.co.za

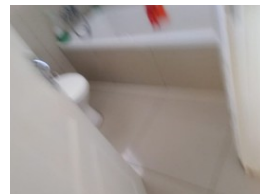
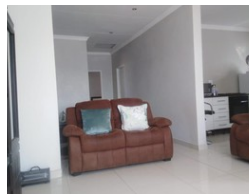
Contact Choprop Sales

0126534444  
0126534444

146 Willem Botha Street  
Wierda Park  
0157



Web Ref RL6184



**R1,100,000**

 2  2

**Monthly Bond Repayment** R11,167.52

Calculated over 20 years at 10.75% with no deposit.

**Transfer Costs** R32,749.00 **Bond Costs** R25,220.00

These calculations are only a guide. Please ask your conveyancer for exact calculations.

**Monthly Levy** R800 **Monthly Rates** R800

2 bedroom house for sale in clayville

This beautiful house is situated in the parkland security estate. It offers 2 bedroom, main bedroom with en\_suite open plan kitchen and a lounge. Call your area agent for any queries.

## Features

Interior		Exterior		Sizes	
Bedrooms	2	Pool	No	Land Size	400m²
Bathrooms	2				
Kitchens	1				
Furnished	False				