



**Libuseng Lillian Mokotleng**  
0824028574  
libuseng@choprop.co.za



**Lucy Martha Matseba**  
0842790300  
lucy@choprop.co.za

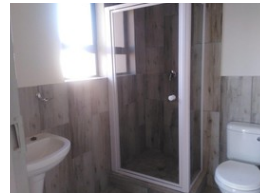
Contact Choprop Sales

0126534444  
0126534444

146 Willem Botha Street  
Wierda Park  
0157



Web Ref RL6179



**R1,400,000**

 3  2  2

**Monthly Bond Repayment** R14,450.64  
Calculated over 20 years at 11% with no deposit.

**Transfer Costs** R40,617.00 **Bond Costs** R27,105.00

These calculations are only a guide. Please ask your conveyancer for exact calculations.

**Monthly Levy** R800 **Monthly Rates** R800

### 3 bedroom house for sale in clayville

This stunning family house situated in the security estate offers 3 bedrooms 2 bathrooms open plan modern kitchen with built-in cupboards and a double garage. read less

### Features

Interior		Exterior		Sizes	
Bedrooms	3	Garages	2	Land Size	500m <sup>2</sup>
Bathrooms	2	Pool	No		
Furnished	False				