



Libuseng Lillian Mokotleng
0824028574
libuseng@choprop.co.za



Lucy Martha Matseba
0842790300
lucy@choprop.co.za

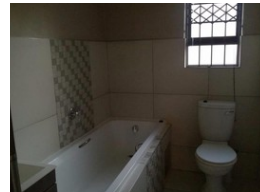
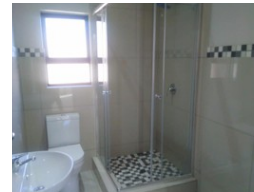
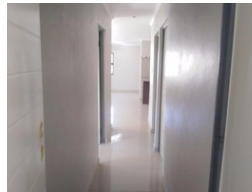
Contact Choprop Sales

0126534444
0126534444

146 Willem Botha Street
Wierda Park
0157



Web Ref RL6167



R1,560,000

 3
  2
  2

Monthly Bond Repayment R15,837.57

Calculated over 20 years at 10.75% with no deposit.

Transfer Costs R47,585.00 **Bond Costs** R28,990.00

These calculations are only a guide. Please ask your conveyancer for exact calculations.

Monthly Levy R800 **Monthly Rates** R800

3 bedroom house for sale in clayville parklands estate

3 spacious bedroom house for sale situated in the security estate in parklands clayville, all bedrooms with built in cupboards and a main bedroom with en suite, double garage. it welcomes with a spacious open plan a lounge, kitchen and a lounge. read less, call your area agent for any query.

Features

Interior

Bedrooms	3
Bathrooms	2
Kitchens	1
Recep. Rooms	2
Studies	1

Exterior

Garages	2
Pool	No

Sizes

Land Size	500m²
-----------	-------