



Libuseng Lillian Mokotleng
0824028574
libuseng@choprop.co.za

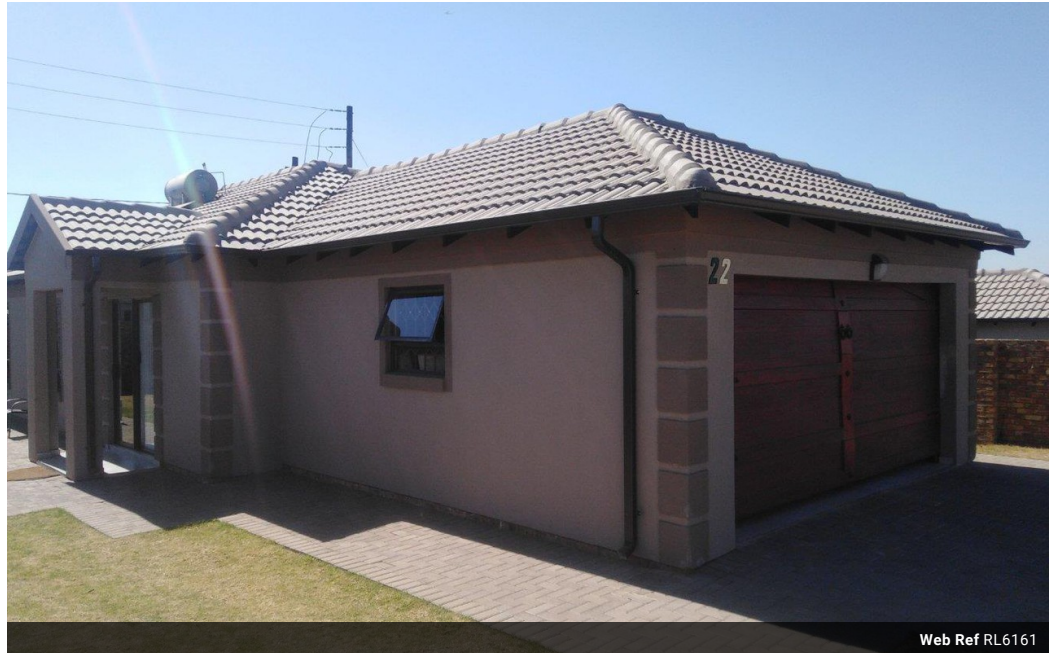


Lucy Martha Matseba
0842790300
lucy@choprop.co.za

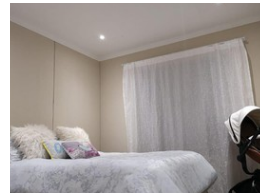
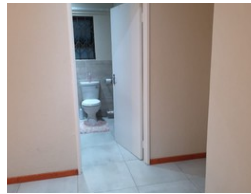
Contact Choprop Sales

0126534444
0126534444

146 Willem Botha Street
Wierda Park
0157



Web Ref RL6161



R1,400,000

 3
  2
  2

Monthly Bond Repayment R14,213.21

Calculated over 20 years at 10.75% with no deposit.

Transfer Costs R40,617.00 **Bond Costs** R27,105.00

These calculations are only a guide. Please ask your conveyancer for exact calculations.

Monthly Levy R900 **Monthly Rates** R800

3 bedroom house for sale in clayville

Parkland is the new 24hr security estate in clayville, this house offers 3 spacious bedrooms, 2 bathroom, open plan dining room a lounge and a kitchen fitted. Main bedroom with en_suite. And a double garage with wooden doors automated. Call now to book for an appointment.

Features

Interior

Bedrooms	3
Bathrooms	2
Kitchens	1
Furnished	False

Exterior

Garages	2
Pool	No

Sizes

Land Size	267m²
-----------	-------