

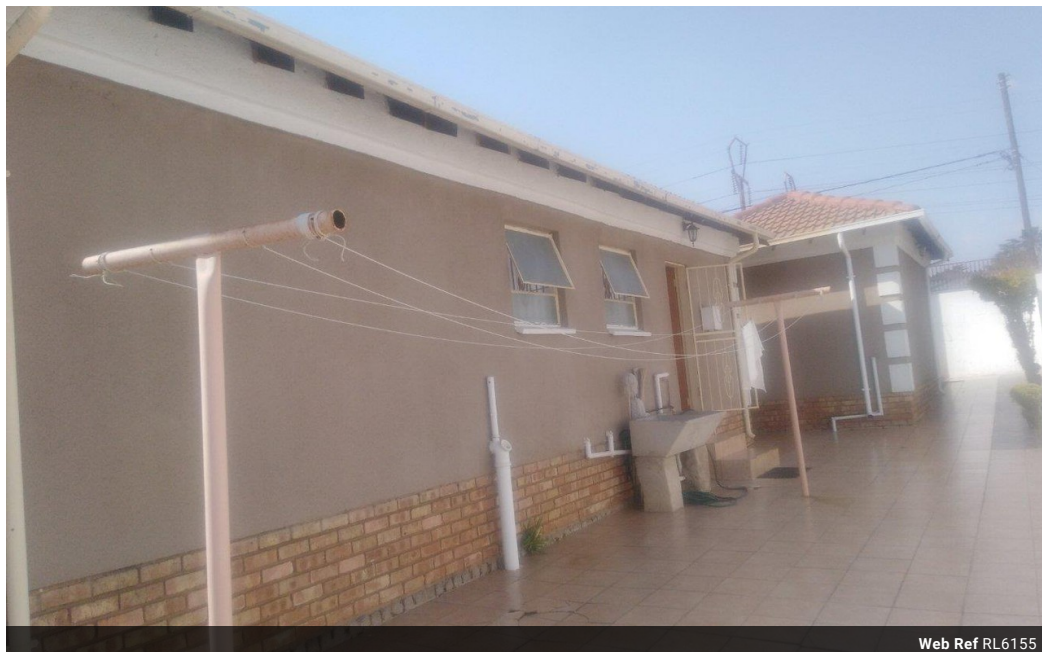


Libuseng Lillian
Mokotleng
0824028574
libuseng@choprop.co.za

Contact Choprop Sales

0126534444
0126534444

146 Willem Botha Street
Wierda Park
0157



Web Ref RL6155



R970,000

3 2 1

Monthly Bond Repayment R10,012.23

Calculated over 20 years at 11% with no deposit.

Transfer Costs R30,412.00 **Bond Costs** R23,335.00

These calculations are only a guide. Please ask your conveyancer for exact calculations.

Monthly Rates R800

3 bedroom house for sale in clayville

This beautiful house is situated in the heart of clayville, next to public transport and public schools. It offers 3 bedrooms 2 bathrooms, kitchen and a lounge and a single garage. Main bedroom with en_suite and all bedrooms will built-in cupboards. Call now for any queries.

Features

Interior

Bedrooms	3
Bathrooms	2
Kitchens	1

Exterior

Garages	1
Pool	No

Sizes

Land Size	300m²
-----------	-------