



Libuseng Lillian Mokotleng
0824028574
libuseng@choprop.co.za



Lucy Martha Matseba
0842790300
lucy@choprop.co.za

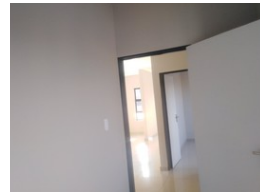
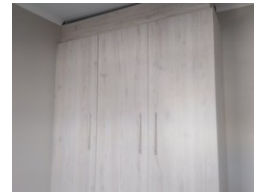
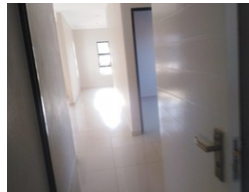
Contact Choprop Sales

0126534444
0126534444

146 Willem Botha Street
Wierda Park
0157



Web Ref RL6154



R138,000

3 2 1

Monthly Bond Repayment R1,401.02

Calculated over 20 years at 10.75% with no deposit.

Transfer Costs R10,888.00 **Bond Costs** R7,460.00

These calculations are only a guide. Please ask your conveyancer for exact calculations.

Monthly Levy R900 **Monthly Rates** R800

3 bedroom house for sale in clayville

This massive family home offers 3 bedroom, 2 bathroom, open plan kitchen and a lounge, single garage, main bedroom with en_suite,

It is situated in the heart of clayville in the new development, clayville is next to all amenities, shopping malls, public schools, public transport and health services. Call your area agent for any assistance.

Features

Interior		Exterior		Sizes	
Bedrooms	3	Garages	1	Land Size	1,000m²
Bathrooms	2	Security	No		
Kitchens	1	Pool	No		
Recep. Rooms	1	Views	False		
Furnished	No				