



Libuseng Lillian
Mokotleng
0824028574
libuseng@choprop.co.za

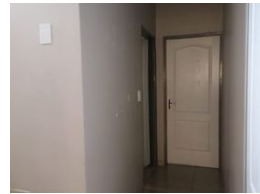
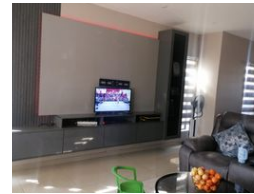
Contact Choprop Sales

0126534444
0126534444

146 Willem Botha Street
Wierda Park
0157



Web Ref RL31474



R1,790,000

 4
  3
  2

Monthly Bond Repayment R18,172.60

Calculated over 20 years at 10.75% with no deposit.

Transfer Costs R60,439.00 **Bond Costs** R30,875.00

These calculations are only a guide. Please ask your conveyancer for exact calculations.

Monthly Levy R1,000 **Monthly Rates** R1,000

4 Bedroom double storey House for sale in clayville

This stunning family house is situated in Parklands security Estate

It offers 4 bedrooms, 3 bathrooms, Open plan of a kitchen, Lounge and Dining room and double garage

Parklands security Estate is based in Clayville with high quality security whereby one cannot access without the owner's concern. Its situated next to all amenities, shopping malls, schools, hospitals and public transport.

Viewing by appointment only.

Features

Interior

Bedrooms	4
Bathrooms	3
Kitchens	1
Recep. Rooms	2
Furnished	No

Exterior

Garages	2
Carports / Parkings	4
Security	Yes
Pool	No
Views	False

Sizes

Land Size	310m²
-----------	-------