



Libuseng Lillian  
Mokotleng  
0824028574  
libuseng@choprop.co.za

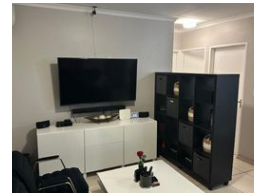
Contact Choprop Sales

0126534444  
0126534444

146 Willem Botha Street  
Wierda Park  
0157



Web Ref RL28387



**R900,000**

2 1

**Monthly Bond Repayment** R9,137.06

Calculated over 20 years at 10.75% with no deposit.

**Transfer Costs** R28,244.00 **Bond Costs** R21,450.00

These calculations are only a guide. Please ask your conveyancer for exact calculations.

## 2 bedroom house for sale in clayville

This massive family home offers 2 bedroom 1 bathroom open plan of a kitchen and a lounge. And a big parking area with a carport. The house is situated in the new development of clayville next to all amenities, shopping malls public transport and major roads leading to high way and freeways.

The security is tidy as it has cameras, paved yard and wall with a beautiful gate.

The main bedroom with built-in Cupboards. And the kitchen is fitted as well.

There is an installation of fibre.

It's a must buy property as it offers all.

Call your area agent now for more info.

## Features

### Interior

Bedrooms	2
Bathrooms	1
Kitchens	1
Recep. Rooms	1
Furnished	No

### Exterior

Carports / Parkings	3
Security	No
Pool	No
Views	False

### Sizes

Land Size	164m²
-----------	-------