



**Libuseng Lillian Mokotleng**  
0824028574  
libuseng@choprop.co.za



**Lucy Martha Matseba**  
0842790300  
lucy@choprop.co.za

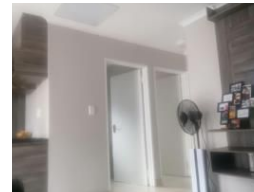
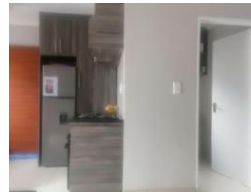
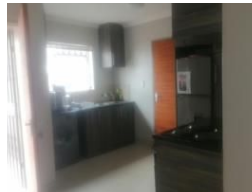
Contact Choprop Sales

0126534444  
0126534444

146 Willem Botha Street  
Wierda Park  
0157



Web Ref RL16870



**R790,000**

 2  1

**Monthly Bond Repayment** R8,154.29

Calculated over 20 years at 11% with no deposit.

**Transfer Costs** R25,898.00 **Bond Costs** R19,565.00

These calculations are only a guide. Please ask your conveyancer for exact calculations.

## 2 bedroom house for sale in clayville

This massive family home situated in the covinient location,next to public transport, It offers 2 bedroom open plan of a kitchen and a lounge ,separate bath and toilet.and a huge space of parking. Its a newly build house with kitchen fitted and the main bedroom.  
Call your area agent for more info

## Features

<b>Pets Allowed</b>	Yes			
<b>Interior</b>		<b>Exterior</b>		<b>Sizes</b>
Bedrooms	2	Pool	No	Land Size
Bathrooms	1			161m²
Kitchens	1			
Recep. Rooms	1			