



**Libuseng Lillian
Mokotleng**
0824028574
libuseng@choprop.co.za



Lucy Martha Matseba
0842790300
lucy@choprop.co.za

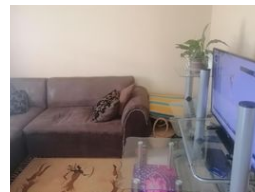
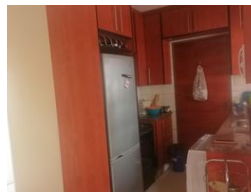
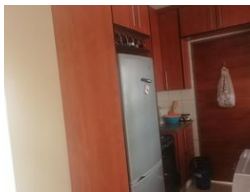
Contact Choprop Sales

0126534444
0126534444

146 Willem Botha Street
Wierda Park
0157



Web Ref RL14183



R890,000

 3  1

Monthly Bond Repayment R9,035.54

Calculated over 20 years at 10.75% with no deposit.

Transfer Costs R28,244.00 **Bond Costs** R21,450.00

These calculations are only a guide. Please ask your conveyancer for exact calculations.

A stunning 3 bedroom house for sale in clayville

It consists of 3 bedroom 1 bathroom separate from the toilet, open plan of a kitchen and a lounge and big carport with parking area if about 3 cars.

This is situated in the new development of clayville ext with a beautiful paving of high std.

The kitchen is fitted with built-in Cupboards and all the bedrooms are fitted, this is less maintenance property. You just need to move in.

Call your area agent now for more info and avoid disappointment.

Features

Pets Allowed		Yes			
Interior				Sizes	
Bedrooms	3	Exterior		Land Size	171m²
Bathrooms	1	Carports / Parkings	3		
Kitchens	1	Pool	No		
Recep. Rooms	1				