



**Libuseng Lillian Mokotleng**  
0824028574  
libuseng@choprop.co.za



**Lucy Martha Matseba**  
0842790300  
lucy@choprop.co.za

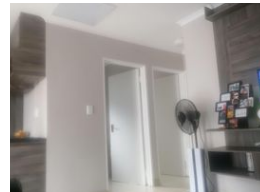
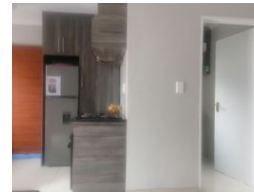
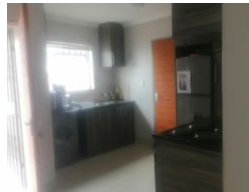
Contact Choprop Sales

0126534444  
0126534444


146 Willem Botha Street  
Wierda Park  
0157



Web Ref RL14173



**R789,000**

 2  1

**Monthly Bond Repayment** R8,010.16

Calculated over 20 years at 10.75% with no deposit.

**Transfer Costs** R25,898.00 **Bond Costs** R19,565.00

These calculations are only a guide. Please ask your conveyancer for exact calculations.

## 2 bedroom house for sale in clayville

This massive family home is convenient of 1st time buyers, it offers 2 bedroom 1 bathroom open plan kitchen and a lounge and double parking. Its a well maintained house with fitted kitchen and bedrooms well tiled with porcelain. And the gate is automated. It is situated in the new development of clayville next to all amenities. Shopping malls and schools are just 2 kilos away. It si priced to go. Call your area to avoid disappointment.

## Features

Pets Allowed		Yes			
Interior		Exterior		Sizes	
Bedrooms	2	Pool	No	Land Size	161m²
Bathrooms	1				
Kitchens	1				
Recep. Rooms	1				