



**Libuseng Lillian
Mokotleng**
0824028574
libuseng@choprop.co.za



Lucy Martha Matseba
0842790300
lucy@choprop.co.za

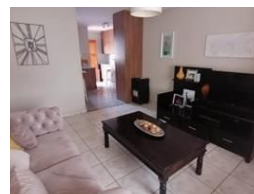
Contact Choprop Sales

0126534444
0126534444

146 Willem Botha Street
Wierda Park
0157



Web Ref RL11603



R1,150,000

3 2 2

Monthly Bond Repayment R11,675.13

Calculated over 20 years at 10.75% with no deposit.

Transfer Costs R32,749.00 **Bond Costs** R25,220.00

These calculations are only a guide. Please ask your conveyancer for exact calculations.

A stunning 3 bedroom house for sale in clayville

It is situated in the heart of clayville in the quietest location,
This massive family home offers 3 bedroom 2 bathroom open plan of a lounge and kitchen,you can enter the house either in the kitchen or at the front door with large wooden swing door.
Entering at the front you walk through the spacious living room into the kitchen area.
The kitchen has wooden cupboards with an undercounter stove with hob,

Features

Interior

Bedrooms	3
Bathrooms	2
Kitchens	1
Recep. Rooms	1

Exterior

Garages	2
Carports / Parkings	2
Pool	No

Sizes

Land Size	215m²
-----------	-------