



Libuseng Lillian Mokotleng
0824028574
libuseng@choprop.co.za



Lucy Martha Matseba
0842790300
lucy@choprop.co.za

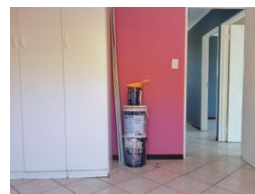
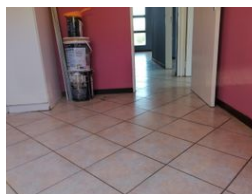
Contact Choprop Sales

0126534444
0126534444

146 Willem Botha Street
Wierda Park
0157



Web Ref RL11558



R980,000

 3  1

Monthly Bond Repayment R9,949.24

Calculated over 20 years at 10.75% with no deposit.

Transfer Costs R30,412.00 **Bond Costs** R23,335.00

These calculations are only a guide. Please ask your conveyancer for exact calculations.

3 bedroom house for sale in clayville

This stunning property is situated in a massive stand size in clayville, it offers 3 bedroom, 1 bathroom open plan of a kitchen and lounge.

It is closest of all amenities, shopping malls, public schools and hospital, clayville is a convenient area closest to johannesburg, pretoria and kempston.

It has an opportunity to invest as well as it has a spacious stand to extend the building, call now to book for an appointment.

Features

Interior

Bedrooms	3
Bathrooms	1
Kitchens	1
Recep. Rooms	2

Exterior

Carports / Parkings	2.5
Pool	No

Sizes

Land Size	250m²
-----------	-------