



Libuseng Lillian Mokotleng
0824028574
libuseng@choprop.co.za

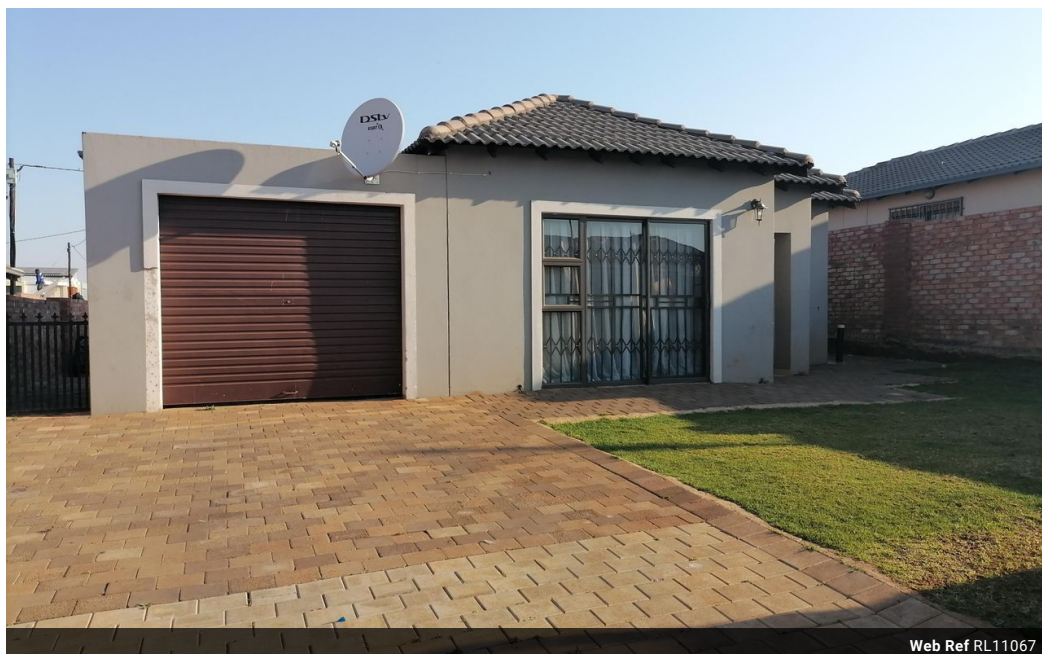


Lucy Martha Matseba
0842790300
lucy@choprop.co.za

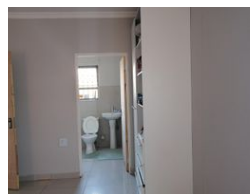
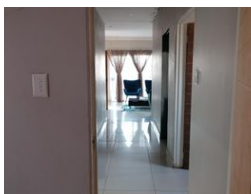
Contact Choprop Sales

0126534444
0126534444


146 Willem Botha Street
Wierda Park
0157



Web Ref RL11067



R1,350,000

 3  2

Monthly Bond Repayment R13,705.59

Calculated over 20 years at 10.75% with no deposit.

Transfer Costs R39,117.00 **Bond Costs** R27,105.00

These calculations are only a guide. Please ask your conveyancer for exact calculations.

Monthly Rates R800

3 bedroom house for sale in clayville

This massive family home offers 3 bedrooms 2 bathrooms an open kitchen and a lounge, 2 bedroom with built-in Cupboards, and main bedroom en suite, It is situated in the secured new development of clayville namely Parklands, next to public transport, shopping malls private and public schools.

It's a must buy property as the levies are little bit reasonable, for more info call your area agent

Features

Interior

Bedrooms	3
Bathrooms	2
Kitchens	1
Recep. Rooms	2

Exterior

Carports / Parkings	3
Pool	No

Sizes

Floor Size	80m²
Land Size	322m²