



Libuseng Lillian Mokotleng
0824028574
libuseng@choprop.co.za



Lucy Martha Matseba
0842790300
lucy@choprop.co.za

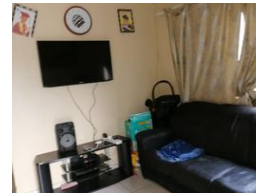
Contact Choprop Sales

0126534444
0126534444

146 Willem Botha Street
Wierda Park
0157



Web Ref RL10097



R700,000

 2  1

Monthly Bond Repayment R7,106.60

Calculated over 20 years at 10.75% with no deposit.

Transfer Costs R23,730.00 **Bond Costs** R17,680.00

These calculations are only a guide. Please ask your conveyancer for exact calculations.

2 bedroom house for sale in clayville

It is situated in the new development in ext 45 clayville, this family home is good for new family who wanna start up, it offers 2 bedroom 1 bathroom open plan a kitchen and a lounge. It is situated near curro academy of learning.

Closest to public routes and public hospitals. Don't miss this out call your area agent now

Features

Interior		Exterior		Sizes	
Bedrooms	2	Pool	No	Land Size	165m²
Bathrooms	1				
Kitchens	1				
Recep. Rooms	1				