

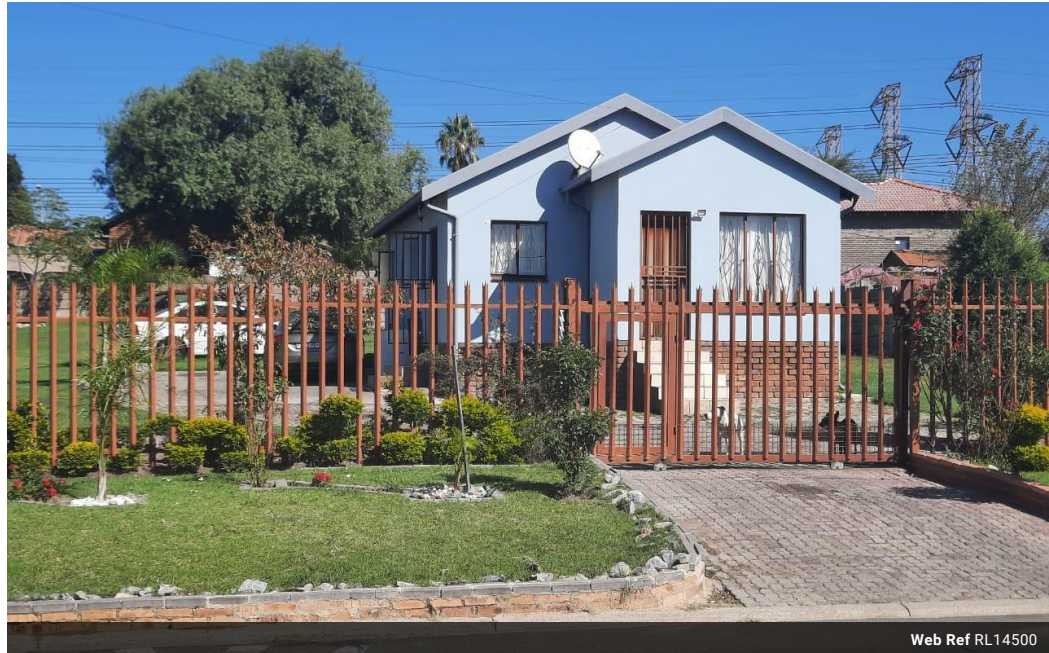


Ntombi Mabaso
078 521 2534
ntombi@choprop.co.za

Contact Choprop Sales

0126534444
0126534444


146 Willem Botha Street
Wierda Park
0157



Web Ref RL14500



R1,300,000

 2  1

Monthly Bond Repayment R13,418.45

Calculated over 20 years at 11% with no deposit.

Transfer Costs R37,617.00 **Bond Costs** R27,105.00

These calculations are only a guide. Please ask your conveyancer for exact calculations.

Cozy 2bed house on a BIG parcel of land in the heart of Norkem Park

This house is built on a huge parcel of land. It features a great kitchen, sitting room, a huge master bedroom fitted with beautiful solid cupboards and a second bedroom.

The land outside can be used to erect more structures or extra buildings. The yard is well maintained with a huge beautiful garden space for planting veggies.

Come and see what you can do with this huge parcel of land.

Features

Interior

Bedrooms	2
Bathrooms	1
Kitchens	1
Recep. Rooms	2

Exterior

Pool No

Sizes

Land Size 1,027m²