



**Libuseng Lillian
Mokotleng**
0824028574
libuseng@choprop.co.za



**Libuseng Lillian
Mokotleng**
0824028574
libuseng@choprop.co.za

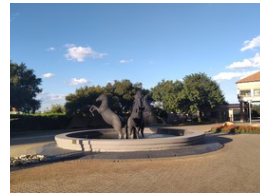
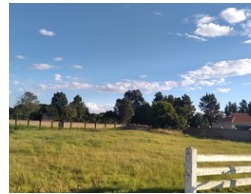
Contact Choprop Sales

0126534444
0126534444

146 Willem Botha Street
Wierda Park
0157



Web Ref RL8992



R1,100,000



0



0

Monthly Bond Repayment R11,167.52

Calculated over 20 years at 10.75% with no deposit.

Transfer Costs R32,749.00 **Bond Costs** R25,220.00

These calculations are only a guide. Please ask your conveyancer for exact calculations.

Monthly Levy R900

Freestanding For Sale in Bredell

vacant land for sale at dunblane equestrian estate

Features

Interior		Exterior		Sizes	
Furnished	No	Security	No	Land Size	1,500m²
		Pool	No		
		Views	False		