



Libuseng Lillian Mokotleng
0824028574
libuseng@choprop.co.za



Lucy Martha Matseba
0842790300
lucy@choprop.co.za

Contact Choprop Sales

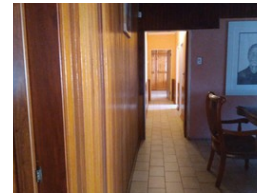
0126534444
0126534444

146 Willem Botha Street
Wierda Park
0157



SOLE MANDATE

Web Ref RL9090



R1,650,000

 4
  2
  1

Monthly Bond Repayment R16,751.28

Calculated over 20 years at 10.75% with no deposit.

Transfer Costs R52,453.00 **Bond Costs** R30,875.00

These calculations are only a guide. Please ask your conveyancer for exact calculations.

Monthly Rates R1,300

Cozy 4 bedroom house for sale in birchleigh with 3 cottages inside

This massive family home is well located in the middle of best suburbs in Kempton Park birchleigh, it offers 4 bedroom 2 bathroom open kitchen with wooden built in cupboards, spacious living area and a dining room.

Main bedroom with en suite and all bedrooms with modern wooden cupboards.

A welcoming garage with the modern wooden door is the entrance to the the extension of 3 cottages with all 1 bed a shower, kitchen and a lounge with an income of +- 12 000.

Pool well maintained and a big space for lapa or any extension.

It is situated next to public routes in the main route of pongolariver. Next to shopping malls private and public schools. Call your agent for more information.. Readless

Features

Pets Allowed	Yes			
Interior		Exterior		Sizes
Bedrooms	4	Garages	1	Land Size
Bathrooms	2	Carports / Parkings	3	996m²
Kitchens	1	Dom. Accom.	1	
Recep. Rooms	3	Pool	Yes	
Studies	0.5			