



Libuseng Lillian Mokotleng
0824028574
libuseng@choprop.co.za



Lucy Martha Matseba
0842790300
lucy@choprop.co.za

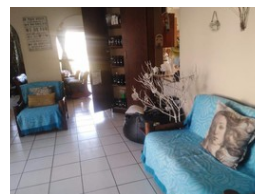
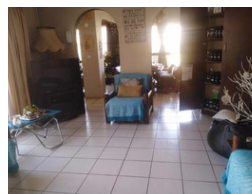
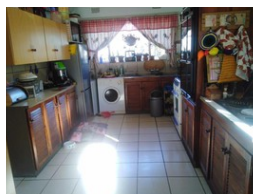
Contact Choprop Sales

0126534444
0126534444

146 Willem Botha Street
Wierda Park
0157



Web Ref RL6169



R1,500,000

3 2 1

Monthly Bond Repayment R15,228.43

Calculated over 20 years at 10.75% with no deposit.

Transfer Costs R45,785.00 **Bond Costs** R28,990.00

These calculations are only a guide. Please ask your conveyancer for exact calculations.

Monthly Rates R800

A family house for sale in birchleigh north

This stunning property offers 3 bedroom .2 bathroom,open plan dining room and a lounge ,a garage and a spacious yard of approximately 994 sqm ,the property can be used for investment as well as residential,its an ideal home that cannot be missed.call now to secure appointment.

Features

Interior

Bedrooms	3
Bathrooms	2
Kitchens	1
Studies	2
Furnished	False

Exterior

Garages	1
Pool	No

Sizes

Land Size	994m²
-----------	-------