



**Libuseng Lillian
Mokotleng**
0824028574
libuseng@choprop.co.za



Lucy Martha Matseba
0842790300
lucy@choprop.co.za

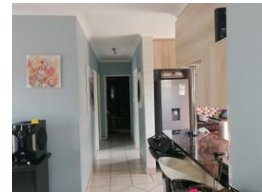
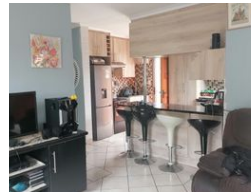
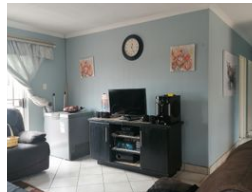
Contact Choprop Sales

0126534444
0126534444

146 Willem Botha Street
Wierda Park
0157



Web Ref RL14080



R1,150,000

 3  2

Monthly Bond Repayment R11,675.13

Calculated over 20 years at 10.75% with no deposit.

Transfer Costs R32,749.00 **Bond Costs** R25,220.00

These calculations are only a guide. Please ask your conveyancer for exact calculations.

3 bedroom house for sale in Birch acres

This massive family home offers 3 bedrooms 2 bathrooms an open kitchen and a lounge and a big carport to pack up to 5 cars. It has an extension of 2 bachelor rooms for income purposes of an amount of 6000 per month. It's a must buy property as it is situated in the convenient location, all bedrooms are fitted with modern built in Cupboards. Main bed with en suite.

The kitchen has built in Cupboards and a stove.
For more info call your area agent to avoid disappointment

Features

Pets Allowed	Yes				
Interior		Exterior		Sizes	
Bedrooms	3	Carports / Parkings	2	Land Size	308m²
Bathrooms	2	Pool	No		
Kitchens	1				
Recep. Rooms	1				