



Wanda Madikizela
0724227395
wanda@choprop.co.za

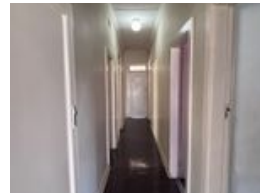
Contact Choprop Sales

0126534444
0126534444

146 Willem Botha Street
Wierda Park
0157



Web Ref RL31501



R1,475,000

3 1 2

Monthly Bond Repayment R14,726.10

Calculated over 20 years at 10.5% with no deposit.

Transfer Costs R45,137.00 **Bond Costs** R28,990.00

These calculations are only a guide. Please ask your conveyancer for exact calculations.

Roseacre Investment Property For Sale

This well-positioned investment property in the peaceful and established suburb of Roseacre offers the perfect blend of residential comfort and income-generating potential.

Main House Features

- 3 well-sized bedrooms
- 1 full bathroom
- Open-plan lounge and dining area
- Functional, fitted kitchen with ample storage
- Spacious layout ideal for family living or owner-occupation

Income-Generating Opportunity

The property includes 4 outside rental units, each separately accessible, offering excellent monthly income. These units are perfect for long-term tenants, students, or working professionals.

- 4 outside rooms (currently rented / tenant-ready)
- Strong demand for rentals in the area
- Potential for additional passive income or extended family use

Features

Interior

Bedrooms	3
Bathrooms	1
Kitchens	1
Recep. Rooms	2
Studies	1
Furnished	No

Exterior

Garages	2
Carports / Parkings	6
Security	Yes
Dom. Accom.	4
Pool	No
Views	False