



Libuseng Lillian
Mokotleng
0824028574
libuseng@choprop.co.za

Contact Choprop Sales

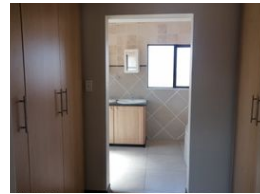
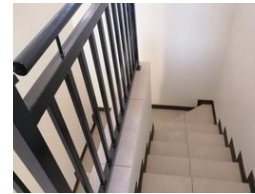
0126534444
0126534444

146 Willem Botha Street
Wierda Park
0157

NEW



Web Ref RL31600



R5,000,000

6 6 4

Monthly Bond Repayment R50,761.45

Calculated over 20 years at 10.75% with no deposit.

Transfer Costs R402,345.00 **Bond Costs** R61,035.00

These calculations are only a guide. Please ask your conveyancer for exact calculations.

Monthly Levy R1,866 **Monthly Rates** R2,832

6 bedroom house for sale in Thatchfield Close

Luxury 6 bedroom duplex with panoramic views and morden finishes.

2 properties in the same yard, both houses with the same features, convinient for both residential as well as investment.

Sophisticated 6 bed, 6 bath in prestigious Thatchfield Close

Experience luxury living at its finest in this immaculate 6 bedroom, 6 bathroom duplex located in Thatchfield Close

perfectly designed for comfort style , this morden home boast spacious open-plan living areas, high end finishes, stunning views

Downstairs

Lounge areas , family lounge where you can entertain guests and braai area

1 bed with built-in cupboards and beautiful wooden floor, 1 full bathroom and the storage

The sleek kitchen comes fully equipped with morden furnishes, built-in stove, enough space for appliances, scullery with built-in cupboards.

Features

Interior

Bedrooms	6
Bathrooms	6
Kitchens	2
Recep. Rooms	4
Studies	2
Furnished	No

Exterior

Garages	4
Carports / Parkings	6
Security	Yes
Pool	No
Views	False

Sizes

Land Size	1,305m²
-----------	---------