

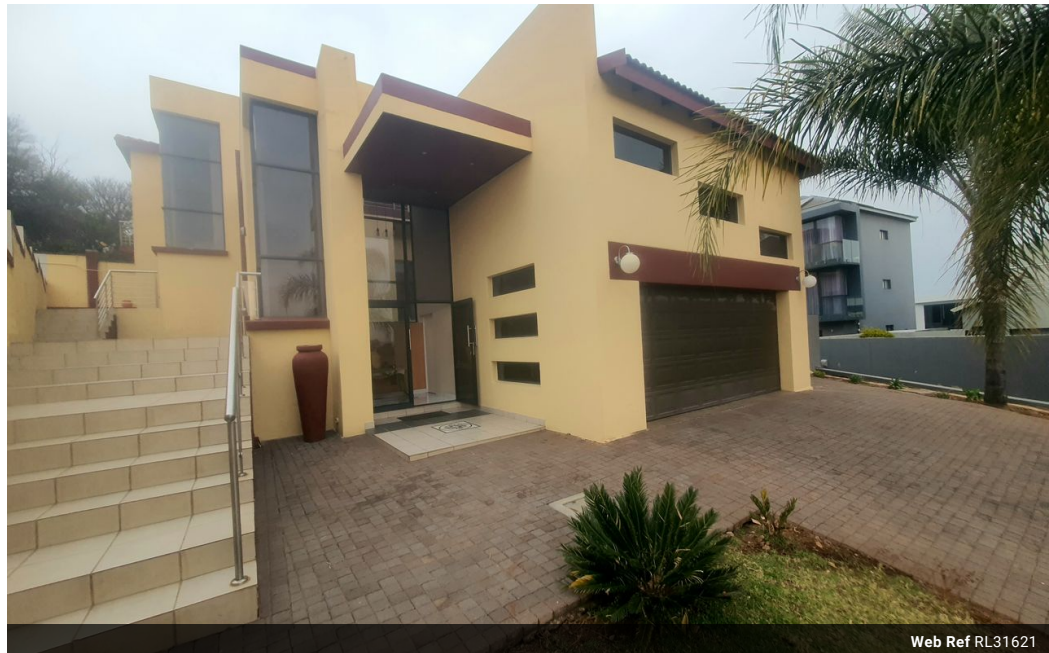


Nadia Chetty
0797799222
nadia@choprop.co.za

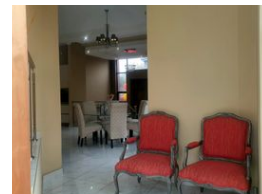
Contact Choprop Sales

0126534444
0126534444

146 Willem Botha Street
Wierda Park
0157



Web Ref RL31621



R4,950,000

 4
  3
  2

Monthly Bond Repayment R49,419.80

Calculated over 20 years at 10.5% with no deposit.

Transfer Costs R397,016.00 **Bond Costs** R61,035.00

These calculations are only a guide. Please ask your conveyancer for exact calculations.

Monthly Levy R2,200 **Monthly Rates** R2,800

FINE & FABULOUS 4 BEDROOM DOUBLE STORY IN CELTIC MANOR ESTATE

Nestled in a serene cul-de-sac within exclusive, upmarket Celtic Manor Estate in Raslouw, this stunning 4-bedroom home embodies the epitome of luxury living. Boasting breathtaking views, impeccable design, and opulent finishes, this property is the ultimate retreat for those seeking sophistication and tranquility.

This magnificent home features, not one, but two master suites, each with a serene oasis offering expansive balconies with superb views of the city skyline and surrounding landscape. The meticulously designed bedrooms are havens of relaxation, complete with luxurious ensuite bathrooms, and ample storage space.

The heart of the home is the bespoke kitchen where culinary dreams come to life. Featuring high-end appliances, sleek cabinetry and quartz-stone tops, this kitchen is perfect for entertaining and everyday...

Features

Pets Allowed		Yes			
Interior				Exterior	
Bedrooms	4			Garages	2
Bathrooms	3			Carports / Parkings	2
Kitchens	1			Security	Yes
Recep. Rooms	3			Pool	Yes
Studies	1			Views	True
Furnished	No				
				Sizes	
				Floor Size	373m ²
				Land Size	554m ²