



Armaan Essa
0828088886
armaan@choprop.co.za

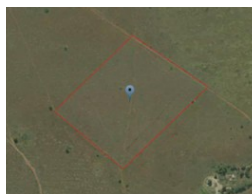
Contact Choprop Sales

0126534444
0126534444

146 Willem Botha Street
Wierda Park
0157



Web Ref RL8547



R1,990,000

Monthly Bond Repayment R20,203.06

Calculated over 20 years at 10.75% with no deposit.

Transfer Costs R74,606.00 **Bond Costs** R32,760.00

These calculations are only a guide. Please ask your conveyancer for exact calculations.

LARGE PIECE OF VACANT LAND ON THE M26 BACK ROAD OF ERASMIA!

A beautiful piece of vacant land just ideal for any development or agricultural use. Situated on the back road of Erasmia this land draws a lot of passing traffic and can be perfect for any developer.

The land size measures a whopping 5.7 hectares and is priced to sell!

Mooiplaats is a neighboring agricultural and farming area.

Call today to make your offer!!

Features