



Armaan Essa
0828088886
armaan@choprop.co.za

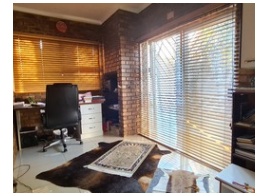
Contact Choprop Sales

0126534444
0126534444


146 Willem Botha Street
Wierda Park
0157



Web Ref RL9284



R1,345,000

 3  2

Monthly Bond Repayment R13,654.83

Calculated over 20 years at 10.75% with no deposit.

Transfer Costs R38,967.00 **Bond Costs** R27,105.00

These calculations are only a guide. Please ask your conveyancer for exact calculations.

Monthly Rates R650

COZY FAMILY HOME WITH VAST LAND FOR ANY DEVELOPMENT POTENTIAL!

A face brick exterior with a cape dutch style meets the eye to this attractive home.

A vast array of flat land surrounding before you enter the lovely spacious home.

Enter from a covered cosy patio into the entrance hall and a brightly spacious lounge to the left.

The open plan dining hall and kitchen is just up ahead with an anthracite fireplace strategically placed to bring warmth to the entire home.

The kitchen is fitted with granite tops and ample cupboards. To the left is a study/office room with a door leading outside for easy access for an at home office.

The 3 bedrooms are wide and spacious, all fitted with built-in cupboards and attract alot of natural sunlight.

There are 2 bedrooms that come with a dressing room and en-suite. The 2nd en-suite also serves as the common bathroom.

The home also comes with an...

Features

Interior

Bedrooms	3
Bathrooms	2
Kitchens	1
Recep. Rooms	2
Studies	1

Exterior

Carports / Parkings	2
Dom. Accom.	1
Pool	No

Sizes

Floor Size	260m ²
Land Size	950m ²