



Armaan Essa
0828088886
armaan@choprop.co.za

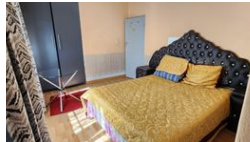
Contact Choprop Sales

0126534444
0126534444

146 Willem Botha Street
Wierda Park
0157



Web Ref RL11985



R1,385,000

 4
  3
  3

Monthly Bond Repayment R14,060.92

Calculated over 20 years at 10.75% with no deposit.

Transfer Costs R40,167.00 **Bond Costs** R27,105.00

These calculations are only a guide. Please ask your conveyancer for exact calculations.

Monthly Rates R872

LAUDIUM! PRACTICAL & COMFORTABLE FIRST TIME BUY! AFFORDABLE AND TICKS THAT WISH LIST!

Spacious and comfortable 4 bedroom, 3 bathroom & triple garage with an expansive yard.

Nestled within a serene and sought-after neighborhood, this exceptional single-storey 4-bedroom home redefines comfortable living. Boasting ample space, including 2 en-suite bedrooms, apart from the 2 other bedrooms and a well-appointed common bathroom, a sprawling fully tiled triple garage, this property presents a unique blend of comfort, functionality, and an outdoor entertainment ambience.

The kitchen is fully fitted with a pantry and storeroom.

This property boasts an extensive yard that presents endless possibilities for outdoor activities, landscaping, and creating your personalized outdoor oasis.

The entrance patio also greets with a total into the home.

Prime Location: Situated in a highly desirable street practically a...

Features

Interior

| | |
|--------------|---|
| Bedrooms | 4 |
| Bathrooms | 3 |
| Kitchens | 1 |
| Recep. Rooms | 3 |
| Studies | 1 |

Exterior

| | |
|---------------------|-----|
| Garages | 3 |
| Carports / Parkings | 1 |
| Security | Yes |
| Dom. Accom. | 1 |
| Pool | No |

Sizes

| | |
|------------|-------|
| Floor Size | 340m² |
| Land Size | 880m² |