



Armaan Essa
0828088886
armaan@choprop.co.za

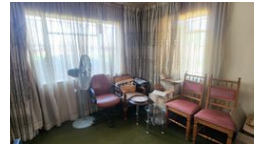
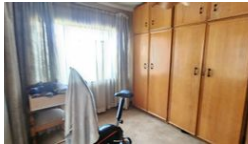
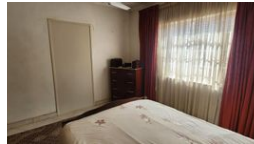
Contact Choprop Sales

0126534444
0126534444

146 Willem Botha Street
Wierda Park
0157



Web Ref RL11801



R1,695,000

 7
  2
  1

Monthly Bond Repayment R17,208.13

Calculated over 20 years at 10.75% with no deposit.

Transfer Costs R54,739.00 **Bond Costs** R30,875.00

These calculations are only a guide. Please ask your conveyancer for exact calculations.

Monthly Rates R738

SPACIOUS AND NEAT FAMILY HOME WITH A FLATLET! CENTRAL LAUDIUM!

A neat and spacious family home situated in the central part of Laudium.

All amenities and schools are literally a stones throw away.

Placed on a corner, this property has two entrances, with one street having the access to the automated garage allowing for 3 cars parking.

The main entrance is on the other street, with a petite, lush green garden before you enter the patio and a door leading into the bright and spacious lounge.

The dining hall and kitchen are next to each other and then the passage which leads to the 5 spacious, fully fitted bedrooms and two separate bathrooms.

This home can easily be an income generator as it can be divided into 3 sections.

There is also an additional flatlet adjacent to the home, with its own entrance.

An ideal investment for it offers all the necessities required in the current...

Features

Pets Allowed Yes

Interior

Bedrooms	7
Bathrooms	2
Kitchens	1
Recep. Rooms	3
Studies	1

Exterior

Garages	1
Carports / Parkings	3
Dom. Accom.	1
Pool	No

Sizes

Floor Size	265m ²
Land Size	500m ²