



Armaan Essa
0828088886
armaan@choprop.co.za

Contact Choprop Sales

0126534444
0126534444

146 Willem Botha Street
Wierda Park
0157

Make an Offer

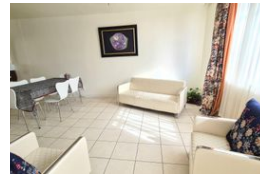
Market value
R799,000

Offers from
R800,000

Offers for this listing must be made in R10,000 increments



Web Ref RL10982



R799,000

2.5 1

Monthly Bond Repayment R8,111.68

Calculated over 20 years at 10.75% with no deposit.

Transfer Costs R25,898.00 **Bond Costs** R19,565.00

These calculations are only a guide. Please ask your conveyancer for exact calculations.

Monthly Levy R1,300 **Monthly Rates** R187

COZY AND SUPER NEAT STARTER APARTMENT IN CENTRAL LAUDIUM!

A super neat and bright apartment on the top floor. This is an ideal starter unit but also boast alot of space. The bedrooms come with fitted built-in cupboards.

The open plan living areas are both spacious and exude beautiful natural light.

The kitchen is fully fitted and can easily accommodate a small family.

One covered parking comes with the unit at a small monthly fee.

This unit is situated in the central part of the Laudium suburb where all amenities are practically at your door step.

Features

Interior

Bedrooms	2.5
Bathrooms	1
Kitchens	1
Recep. Rooms	2

Exterior

Carports / Parkings	1
Pool	No

Sizes

Floor Size	85m²
Land Size	85m²