

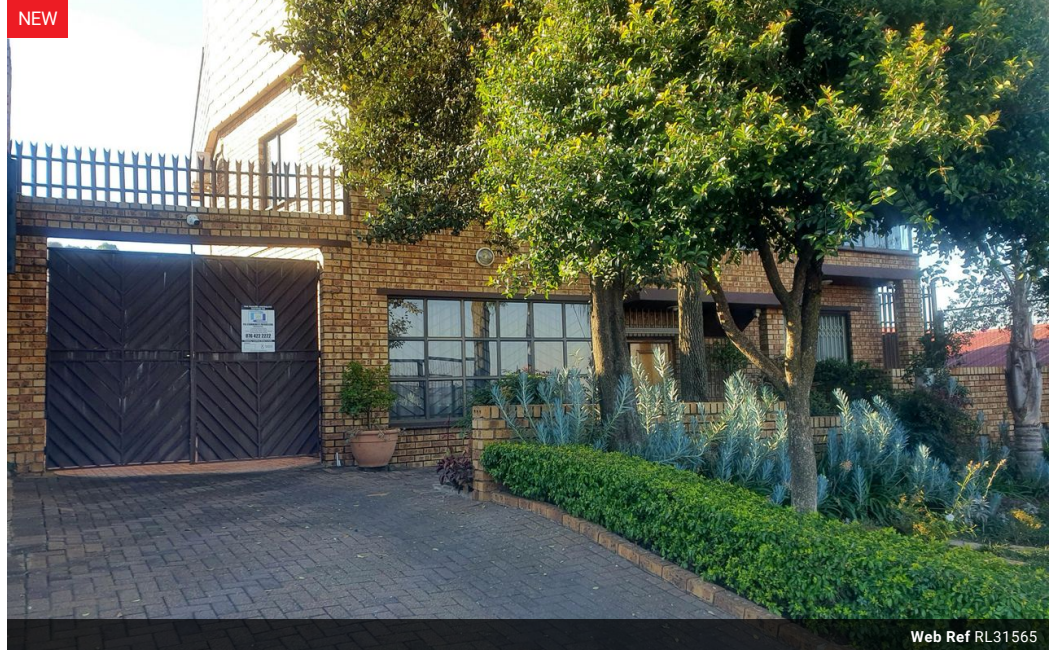


Nadia Chetty
0797799222
nadia@choprop.co.za

Contact Choprop Sales

0126534444
0126534444

146 Willem Botha Street
Wierda Park
0157



Web Ref RL31565



R2,950,000

🛏 6 🚿 4 🚗 3

Monthly Bond Repayment R29,949.25

Calculated over 20 years at 10.75% with no deposit.

Transfer Costs R156,055.00 **Bond Costs** R42,185.00

These calculations are only a guide. Please ask your conveyancer for exact calculations.

Monthly Rates R570

6 BEDROOM MASTERPIECE FOR SALE IN LAUDIUM

Perfect for those who demand the best!

Experience the pinnacle of luxury living in this stunning 6 bedroom masterpiece in Laudium. With its elegant design, lavish interiors, and expansive spaces, this home is the epitome of sophistication and comfort.

This stunning, facebrick, double-story home perfectly blends classic charm with modern amenities. The facebrick exterior not only adds a touch of sophistication, but also provides durability and low-maintenance, ensuring your home remains beautiful for years to come.

The home boasts 6 bedrooms, including a majestic primary suite on the upper level, complete with ample space and natural light. Two additional bedrooms sharing a common bathroom, and a well-equipped study boasting magnificent views of the suburb skyline, and a generous-sized attic, for additional storage,...

Features

Pets Allowed		Yes			
Interior				Exterior	
Bedrooms	6			Garages	3
Bathrooms	4			Carports / Parkings	5
Kitchens	1			Security	No
Recep. Rooms	3			Dom. Accom.	1
Studies	1			Pool	No
Furnished	No			Views	True
				Sizes	
				Floor Size	391m ²
				Land Size	566m ²