



Sivanandan  
Govindasamy Packary  
0824920583  
siva@choprop.co.za

Contact Choprop Sales

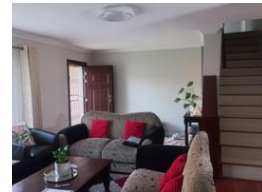
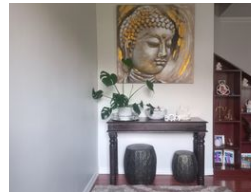
0126534444  
0126534444

146 Willem Botha Street  
Wierda Park  
0157

UNDER OFFER



Web Ref RL11613



**R2,050,000**

4 3 2

**Monthly Bond Repayment** R20,812.19

Calculated over 20 years at 10.75% with no deposit.

**Transfer Costs** R80,947.00 **Bond Costs** R34,625.00

These calculations are only a guide. Please ask your conveyancer for exact calculations.

**Monthly Rates** R850

Modern and stuning family home in Heuweloord !!!

Make this investment opportunity yours to own today !!!

As one enters on can find an entrance hall, on the right a spacious lounge area, fire place, leading to the dining room and family/ tv room, laminate floors and open onto the garden area, patio, entertainment area overlooking the swimming pool. The separate kitchen is very spacious, scullery, gas stove, granite tops, space for appliances, double door fridge, lots of cupboard space, tiled leading to the laundry area and opening to the outside courtyard. The huge guest bedroom, built in cupboards, laminate floors, bathroom, living area and flows onto the patio area with a louvre deck.

Upstairs one can find two spacious bedrooms, built in cupboards, laminate floors, sharing a newly revamped bathroom, tiled and the master bedroom is huge, built in cupboards, laminate...

## Features

**Pets Allowed** Yes

### Interior

Bedrooms	4
Bathrooms	3
Kitchens	1
Recep. Rooms	3
Studies	1

### Exterior

Garages	2
Carports / Parkings	2
Security	No
Dom. Accom.	1
Pool	Yes
Views	Yes

### Sizes

Floor Size	240m <sup>2</sup>
Land Size	500m <sup>2</sup>