



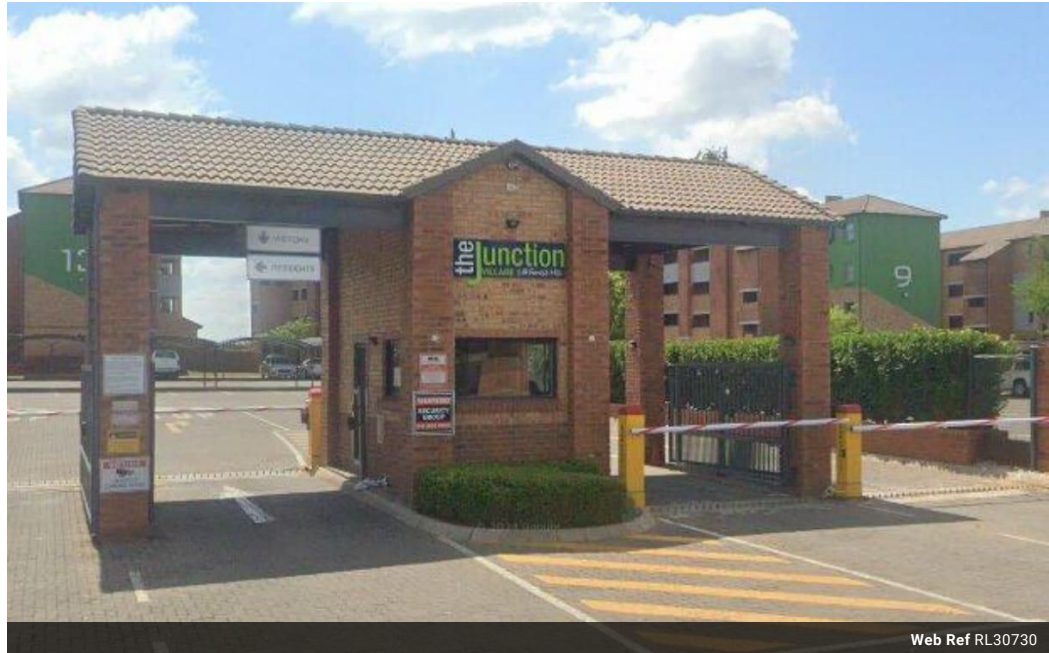
**Pearl Pantsi**  
068 540 2309  
pearl@choprop.co.za

Contact Choprop Sales

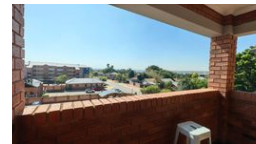
0126534444  
0126534444

146 Willem Botha Street  
Wierda Park  
0157

## 2 Bedroom Apartment For Sale in Heuweloord



Web Ref RL30730



# R766,800

 2  1

**Monthly Bond Repayment** R7,784.78

Calculated over 20 years at 10.75% with no deposit.

**Transfer Costs** R25,898.00 **Bond Costs** R19,565.00

These calculations are only a guide. Please ask your conveyancer for exact calculations.

**Monthly Levy** R1,435 **Monthly Rates** R500

### Modern 2-Bedroom Apartment at The Junction - Prime Location with Exceptional Amenities!

Nestled in the vibrant heart of Forest Hill, this stylish 2-bedroom, 1-bathroom apartment at The Junction offers an ideal blend of comfort, convenience, and sophistication. Perfect for young professionals, couples, or small families, this residence boasts exquisite finishes, contemporary design, and a warm, inviting atmosphere.

#### Apartment Features:

**Spacious Layout:** Well-designed living spaces with ample natural light.

**Two Comfortable Bedrooms:** Perfectly sized with built-in wardrobes for extra storage.

**Modern Bathroom:** Sleek finishes and premium fittings for an elegant touch.

**Open-Plan Kitchen & Living Area:** Designed for effortless entertaining and everyday comfort.

**Secure Living:** 24-hour security ensures peace of mind.

#### Prime Location & Nearby Amenities:

This apartment's location offers seamless access to

## Features

#### Interior

Bedrooms	2
Bathrooms	1
Kitchens	1
Recep. Rooms	1
Furnished	No

#### Exterior

Carports / Parkings	1
Security	Yes
Pool	No
Views	No

#### Sizes

Floor Size	54m²
------------	------