



**Sona Ramlal**  
0737559312  
sona@choprop.co.za

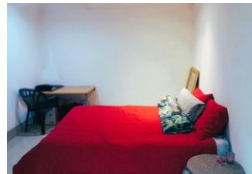
Contact Choprop Sales

0126534444  
0126534444

146 Willem Botha Street  
Wierda Park  
0157



Web Ref RL15055



**R3,295,000**

 12
  8
  1

**Monthly Bond Repayment** R33,451.79

Calculated over 20 years at 10.75% with no deposit.

**Transfer Costs** R196,997.00    **Bond Costs** R45,955.00

These calculations are only a guide. Please ask your conveyancer for exact calculations.

**Monthly Rates** R1,065

## 12 Bedroom House For Sale in Erasmia

This property is an ideal as an investment potential with great return. practically laid out on a vast land with separate and convenient access, through automated gates.

It comprises of 4 separate units with separate entrances.

### Unit 1

3 bedrooms, 2 bathrooms, a kitchen, open plan lounge & dining area.

All bedrooms are tiled and come with fitted built-in cupboards. The main bedroom is an en-suite.

### Unit 2

3 bedrooms, 2 bathrooms and a fitted kitchen and an open plan lounge & dining area. All bedroom are tiles and come with fitted built-in-cupboards. The main bedroom is an en-suit.

Unit 3 & 4 are duplexes mirroring each other.

Each unit comprises of 3 bedrooms, upstairs, fully fitted & tiled, and an open plan lounge, kitchen and dining area downstairs. Parking for all 4 units allocated with 1 carport each and...

## Features

### Interior

Bedrooms	12
Bathrooms	8
Kitchens	4
Recep. Rooms	8

### Exterior

Garages	1
Carports / Parkings	4
Dom. Accom.	1
Pool	No

### Sizes

Floor Size	600m <sup>2</sup>
Land Size	1,465m <sup>2</sup>